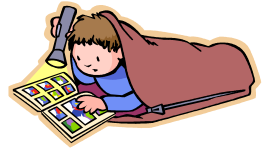




APPS Grade 6 Camp 2017 'Kangarooobie' Monday June 5th - Friday June 9th



February 9, 2017

Dear Parents,

This year, the Grade 6 camp will be held from **Monday 5th June to Friday 9th June** at Kangarooobie. Camp Kangarooobie is a magnificent 2000 acre grazing property situated on the Gellibrand River and coastline at Princetown between the 'Port Campbell' and 'Otway' National Parks. The region is famous for the spectacular 12 Apostles and Historic Shipwreck Coast. The children will enjoy and participate in a range of activities focusing on the natural environment and working farm.

Kangarooobie is accredited with the Australian Camps Association, ensuring that all aspects of the camp, from activities to buildings and staff are presented in a safe and appropriate manner. Accommodation at Kangarooobie is in heated bunk rooms. For mealtimes and evening activities, Kangarooobie has a large dining and recreation hall which features a fantastic sunken fireplace which is encircled by cosy seating.

At the camp site, children will experience a range of activities including a ropes challenge and Initiatives course, canoeing, bushwalking, bush cooking and farm activities. Children will have the opportunity to observe and assist in the running of the working farm. The camp will also feature trips to visit to the Otway Fly, 12 Apostles and the Loch Ard Gorge.

The activities at camp provide the children with opportunities to develop both individual and team skills. Although the children have a lot of fun on camp, there is a strong focus on safety, with professional instructors leading the canoeing, farm activities and other adventure activities.

The cost for the camp is \$375.00. This amount includes coach travel, with air conditioning and seatbelts, and the fee charged per camper by Kangarooobie. This fee covers food, accommodation, the use of camp facilities and the hire of expert leaders for the adventure activities.

A NON REFUNDABLE deposit of \$50 is required by Friday 24 February to secure your child's place at camp.

The balance of the camp cost must be paid in full by Friday 26th May.

Bpay is the preferred method of processing payments. Please use the unique family reference code on the attached family statement to make payment/s via Bpay and complete and return the deposit form to your child's teacher. Note that BPay payments can take up to two days to reach our system so please allow for this when making payments. After making a payment via BPay, please send an email to the school advising of the amount paid and what the payment is for. The school email address is amsleigh.park.ps@edumail.vic.gov.au

As in previous years, we will offer a payment plan to pay off the balance over the next 4 months, or full payment will be accepted at any time. If you need to discuss alternative methods of payment please contact our Business Manager, Karen Hogan.

Please complete the attached form and return to your child's teacher along with the deposit before Friday 24th February.

Kind regards,

5/6 Teaching Team,

Ms Trish Jones (Grade 6 Camp Coordinator), Mr Scott French, Miss Lisa Warren and Miss Sam Hayes ☺

Here is a suggested payment plan, please retain for your records:	Due By Date	Amount
	Fri 24 th Feb	\$50.00 (NON REFUNDABLE DEPOSIT)
	Fri 17 th March	\$85.00 (Payment 1)
	Fri 21 st April	\$80.00 (Payment 2)
	Fri 5 th May	\$80.00 (Payment 3)
MUST BE PAID IN FULL BY:	Fri 26th May	\$80.00 (FINAL PAYMENT)

