



## DIARY DATES

### MAY

**Tuesday 15<sup>th</sup> – Thursday 17<sup>th</sup>**  
NAPLAN Testing – Grades 3 and 5

**Monday 21<sup>st</sup> – Friday 25<sup>th</sup>**  
Education Week

**Monday 21<sup>st</sup>** – G5/6 A&B Stem Exc.  
3A 3B 5/6C 5/6D – Drama Incursion

**Tuesday 22<sup>nd</sup>** – PA PB 1A 1B 2A 2B –  
Drama Incursions

**Wednesday 23<sup>rd</sup> – OPEN NIGHT**  
1/2A 3/4A 4A 4B 5/6A 5/6B –  
Drama Incursion

**Thursday 24<sup>th</sup>** – 5/6 Science Incursion  
Whole School Dress Up Day

**Friday 25<sup>th</sup>** – Grandparents' Day

**Monday 28<sup>th</sup>** – G5/6 C&D Stem Exc.

**TUESDAYS ARE NUDE FOOD DAYS**

**WEDNESDAY IS SCHOOL BANKING**  
**DAY**

## DUE BY DATES:

### MAY

**Thursday 31<sup>st</sup>**

Grade 3/4 Camp (payment 3)

**COPIES OF ALL NEWSLETTERS, FORMS  
AND NOTICES ARE AVAILABLE ON  
OUR SCHOOL WEBSITE.**

## Principal's Report

# EDUCATION WEEK 2018

*Celebrating the arts*

20-26 MAY  
#EDWEEKVIC



Next week we will be celebrating Education Week and we hope to see you at APPS for one of the very exciting events we have planned. The theme for this year is 'Celebrating the Arts', which fits very well with Amsleigh Park as we have an excellent Arts program, and we highly value this area of learning. Research shows clearly that students who participate in the Arts achieve higher academic results, and one of the Education State targets focuses on increasing access to the Arts for all children. Our timetable for the week includes:

**Monday:** Assembly performances / Drama Incursion 3A, 3B, 5/6D, 5/6C

**Tuesday:** Drama Incursion - PA, PB, 1A, 1B, 2A, 2B

**Wednesday:** Drama Incursion - 1/2A, 3/4A, 4A, 4B, 5/6A, 5/6B / Open night 6.00 PM – 7.00 PM / Student Performances 7.00 PM to 7:45 PM.

**Thursday:** Dress Up Day - Dress to celebrate the arts (Musician – Artist – Dancer – Painter)

**Friday:** Grandparents Afternoon (12:00 PM – 1:50 PM)

It truly is a whole week of celebration to showcase both our school and that we are a proud to be part of the Education State. All across the week there is something for everyone and we hope you enjoy the opportunities on offer. Many thanks to Miss Den Elzen and Mr Arundale who have planned this outstanding week for our school community.

### **Student Absences – Changes coming in Term 3**

Recently the Department of Education and Training (DET) released a new policy for managing student absences, which requires a change for both our school and parents. This change is designed to improve the safety of all children by making it mandatory to inform the school on the same day if your child is absent from school. Included in this week's newsletter is a fact sheet that explains the legal obligations of parents in ensuring that their child attends school every day. These changes will officially take place from the start of Term Three.

This system also promotes daily school attendance. Going to school every day is the single most important part of your child's education; they learn new things every day – so missing school puts them behind. A child who is absent for 10 days each school year misses an accumulated total of more than a whole school term, and this can lead to significant deficits in their learning if they are unable to catch up. We know that every day counts and other than being absent when they are ill, children should not miss school.

### **Well done Grade 1/2s**

It's always great to hear positive feedback, and I was thrilled to receive such an email from Moonlit Sanctuary last week. Our Grade 1/2s had visited that day. Their staff were very impressed by the behaviour of our students and the organisation of the teaching staff. Whilst, I would expect this it's always great to hear about it, so well done Grade 1/2s for leaving a positive impression.

## Sizzling Starts

Our school has been focusing on teaching Writing and one area we have been developing is our student's creative flair. Our Writing program, which we call VOICES, encompasses many different aspects that help students to develop the quality of their work. We emphasize that the writer must aim to ensure that the person reading a written piece engages with the content. One part of this learning is called 'sizzling starts' which reminds children to begin their writing in an engaging way. For example you could consider the following opening sentence.

*'As I was walking along the street I saw it for the first time. I was scared.'*

Could be rewritten as:

*'I crept along, my breath came out in short bursts, fear welling inside. Then I saw it!'*

The second version would be far more likely to capture the interest of the reader and as a result they would be eager to read on and find out more about the situation being described.

## Attitudes to School Survey

Each year our grade 4-6 students have the opportunity to participate in the DET 'Attitudes to School Survey', sharing their perceptions on a range of areas. Connectedness to peers, classroom behaviour, engagement, help and support are just some of the areas students are asked about. The survey takes about 20 minutes to complete and is done during a class session. The data that we receive is analysed and we then identify areas we would like improve further. Students will be undertaking this survey over the next week.

## Dog Friendly Zone

Please remember that all dogs coming into the school grounds before or after school must stay in the **dog friendly zone**. This area is located adjacent to the P-2 adventure playground along State Street, and has clear signage to indicate this is where dogs and owners can wait. Please refrain from walking dogs through busy areas, as a number of our students find this situation uncomfortable. The dog friendly zone is an ideal meeting place for families who would like to walk to School with their pet, and we certainly do not want to discourage this practice. However, we need to be mindful that many students do not have regular contact with dogs, and can find this a frightening experience. For the record, I am a dog owner and myself, but I firmly believe this is a fair and common sense approach to meet the needs of all members of our community. My sincere thanks to those families who are already adhering to this expectation, we really appreciate it.

## Building Program Update

Work on Building 1 continues, and at present builders are doing the major structural work inside the building, which involves installing many large and very heavy steel beams. This is the most challenging and complex aspect of the whole project, and it needs to be undertaken very carefully. The timeframe for completing work in building 1 has been delayed and we now expect to move in sometime early in Term 4. I'll keep you posted as we find out more.

## Grade 3/4 Camp Meeting

Many thanks to our Grade 3/4 staff and Outdoor Education Leader, Miss Carr, for running the information night for Grade 3 and 4 parents about this year's camping program. A large group of parents came along to make sure they are informed about this year's exciting camping program. Our staff undertake meticulous organisation to ensure the camp runs smoothly and that all children can enjoy an exciting and safe experience in a high supported environment.

This year we have split our Grade 3 and 4 into two separate camps, so the 4s do the first half of the week and then changeover with the 3s on Wednesday. The 3/4 camp is held at Lady Northcote, which offers an excellent standard of camping, and is run by the YMCA. We have attended this camp a number of times and it has some great outdoor education experiences for our students. Pictured right is the very unique giant foosball area, which is a real winner with kids.



## Special Thanks

Many thanks to Mrs Fandrich who has reintroduced the wonderful 'Father's for Mother's day' event. It's a lovely idea for dads and kids to get together to make something nice for 'mum' and spending quality time together is always a big plus. Some photos are included in this edition of the 'Buzz.'

Until next time, hope to see you at our 'Education Week' celebrations.

*Michael Cormick*

Principal

## *Bec's Bulletin...*

### **NAPLAN Testing Week**

Our Grade 3's and 5's sat NAPLAN (National Assessment Program for Literacy and Numeracy) tests this week, including Reading, Writing, Language Conventions and Numeracy. NAPLAN testing provides a snapshot of how our students are performing in English and Mathematics at this point in time. NAPLAN results should not be considered in isolation. Students' NAPLAN results feed into our much broader assessment schedule and are just one of the regular range of assessments conducted by our classroom teachers. We monitor and track student learning over their time at Primary School and use all assessment data, including daily observations, to make an 'on balance' judgement of achievement at the time of student reports in June and December. Our NAPLAN results for 2018 will be available in Term 3.



We prepare our students for NAPLAN and encourage them to give the testing their very best effort. Although we love to celebrate the English and Mathematics achievements of our students, it is important to remember that there are many things we value in our students that cannot be measured in NAPLAN. For example, NAPLAN doesn't measure a student's ability to creatively problem solve, be a good friend, their athletic ability, their creative arts abilities and more. We are lucky to have an amazing range of talented students at Amsleigh Park, who have strengths in all of these areas!

### **School Signage**



You may have seen the 'directional' and 'reminder' signs installed around the school. The signage on our gates directs all visitors to Amsleigh Park to the school office during the school day. There are also some very important signs to remind families to 'shut the gate' when leaving our school grounds. This is especially important for student safety and we ask everyone to support us in our efforts to provide a safe and secure environment for all students.

Also an important reminder to observe all signage and direction regarding the building project. The construction zones are clearly fenced and marked out, to ensure our students stay safe during this exciting time of change in our school.

### **Road Safety**

We want all of our students to arrive at school and get home safely again every day! We'd like to remind all students about the importance of road safety. Parents need to consider whether their child has the road safety sense and awareness skills to be able to safely make their way to school without direct adult supervision. While we love to see students walking and riding to school for their fitness and for the environment, some students may not have yet developed the skills needed to do this safely. For example, looking both ways before crossing the road, being aware of riding past 'blind' driveways, always crossing at the crossing where available etc.



The Department of Education advises that road safety authorities recommend that before the age of nine or ten years children should not ride a bicycle in traffic without adult supervision. Depending on their cycling skills and experience, some children over this age may still require supervision and that generally speaking, children under the age of twelve do not have the neuro-physiological and psychological development to cope with complex traffic situations on their own.

Please consider these things carefully when deciding if your child is ready to walk or ride to school unsupervised.



## School Uniform



Our students look really terrific when they are all in school uniform. It creates a strong sense of school pride and fosters a sense of belonging for all students.

As per the School Uniform Policy, students are to wear a combination of the school uniform pieces only. There are a variety of tops and jumpers, short and long pants and skorts available to cater for different choice and weather conditions. A reminder that leggings as pants are not part of the school uniform and are not to be worn.

Please see Kath or Joanne in the uniform shop on Tuesday and Thursday afternoons from 3.30-4.00pm, or Wednesday mornings from 8.45-9.30am to purchase uniforms. Alternatively, you can fill out an order form and leave it with the general office at any time, for processing when the uniform shop is next open.

## Emergency Evacuation Plan

It is important that all students and staff are familiar with Amsleigh Park's Emergency Management Plans, as part of our obligation to the Occupation Health and Safety Legislation. Each term we are mandated to practice our emergency evacuations, to ensure students and staff are well prepared for a potential emergency situation. Your child may come home and talk to you about the evacuation practice and we would appreciate your support in reinforcing that although an emergency situation is unlikely, it is important to know what to do if it were to happen. Teachers prepare students to these practices, as of course it is not our intention for students to become frightened or overwhelmed in these situations.



*Bec Carr* - Acting Assistant Principal

## LOST PROPERTY

There are many items piling up in lost property.  
Please check to see if any of these belong to you.

If not claimed by the end of term,  
any un-named, un-claimed items will either be donated or disposed of.

## UNIFORM DONATIONS

The Uniform Shop volunteers are grateful for uniform donations, however, due to lack of storage, they are unable to accept non school items (eg. Target brand etc.).

Thank You.

## FATHERS FOR MOTHERS' DAY

WHAT A FUN NIGHT! THANK YOU TO ALL THOSE WHO ATTENDED! BELOW ARE SOME HAPPY SNAPS FROM THE NIGHT



## PFA UPDATE

- **Disco Queens and Kings!!**

Huge thanks to all the wonderful volunteers who made the Disco such an outstanding success!! We raised just over \$1,700.00. Special mention to Becky for coordinating and organising the Grade 4 Fundraising Team and to the team itself for sourcing, buying and distributing food, glow sticks, masks, etc. Big thanks to the Geek Team for the impressive spread sheets, Christine for getting all the volunteers sorted, and Pepe DJ for the sweet beats.

A huge shout out to all our AWESOME teachers who took the time to get the kids' masks made in class; they looked spectacular, the grade 4 teachers for organising the posters, and to the teachers who attended on the night, particularly Jo Abbott who worked tirelessly. And finally a humongous thanks to all the kids and families who came along for a boogie, it was a great night enjoyed by all!

- **Mothers' Day Stall**

Well done to Sonya, Caz and the Grade 2 gang (plus extras) for their great work running the Mothers' Day stall. It was a great success with all the kids enjoying the selection of goodies to spoil their Mums with. Hope all you Mums out there had a wonderful day on Sunday and were thoroughly pampered!

- **Comedy Night**

The Comedy for a Cause night is coming up on Saturday, 23rd June, so make sure you get a gang together and buy some tickets. Information is included in this newsletter, or you can see the flyer sent via email by your class rep last week. Last year's Comedy Night was a great laugh, so make sure you don't miss out!

- **Next PFA Meeting**

Our next PFA meeting will be held on Tuesday 22nd May at 7pm in the After School Care room. Come along and join us, bring your ideas of what you want to see happen at our great school, or just come along to get out of putting the kids to bed! All welcome.





## EVERY DAY COUNTS

### SAME-DAY NOTIFICATION OF UNEXPLAINED STUDENT ABSENCES

#### Fact sheet for parents/carers

If your child is sick or absent, you are required to notify their school as soon as possible **on the day of absence** using one of the following methods:

1. **Online:** log the absence directly using your school's IT platform - [FlexiBuzz](#)
2. **Telephone:** the school office and let the staff know your child's name, class, date of absences and reason. **Phone 9544 1553**
3. **Email:** the school and provide the staff with your child's name, class, date of absences and reason. [amsleigh.park.ps@edumail.vic.gov.au](mailto:amsleigh.park.ps@edumail.vic.gov.au)

Notifying the school of your child's absence either prior to, or on the day that they will be away, helps ensure the safety and wellbeing of children and will fulfil your legal responsibility.

#### Why do I need to notify the school if my child is absent?

Schools need to know when and why a child is absent and you need to know if your child isn't at school.

From the end of Term 2 2018, all Victorian government schools are required to contact parents/carers as soon as practicable on the same day of an unexplained student absence. If your child is absent on a particular day and you have not contacted the school to explain why, the absence will be marked as unexplained.

This system also promotes daily school attendance. Going to school every day is the single most important part of your child's education, they learn new things every day – missing school puts them behind.

#### What is your responsibility?

You are legally required to ensure your child attends school every day or you must provide an explanation for their absence. You should let the school know in advance of any upcoming absences or let them know in the morning if your child won't be at school. In order for schools to implement the same day notification requirement, it's essential that you provide the school with your most up-to-date contact details.

Generally one notification will be sent per family. Should there be circumstances that require both parents and carers to be notified, please contact the school to make the necessary arrangements.

#### What is the school's responsibility?

The school must notify you of an unexplained absence in relation to your child as soon as practicable on the same day.

Schools will let you know either by your school's online communications app, SMS, phone call or email. If you can't be reached because the school does not have your correct contact details (i.e. changed phone number, SMS/email failure notification received etc.), the school will attempt to make contact with any emergency contact/s nominated on your child's file held by the school. Where possible, this contact will be made on the same day of the unexplained absence.

#### Where can I learn more about the process for managing student absences?

Ask your school for a copy of the *Attendance Policy* which outlines the school's processes and procedures for monitoring, recording and following-up of student absences.

## FINANCIAL ASSISTANCE INFORMATION FOR PARENTS

Every Victorian child should have access to the world of learning opportunities that exist beyond the classroom. The Camps, Sports and Excursions Fund helps ensure that no student will miss out on the opportunity to join their classmates for important, educational and fun activities. It is part of making Victoria the Education State and the Government's commitment to breaking the link between a student's background and their outcomes.

### CAMPS, SPORTS & EXCURSIONS FUND (CSEF)

School camps provide children with inspiring experiences in the great outdoors, excursions encourage a deeper understanding of how the world works and sports teach teamwork, discipline and leadership. All are part of a healthy curriculum.

CSEF will be provided by the Victorian Government to assist eligible families to cover the costs of school trips, camps and sporting activities.

If you hold a valid means-tested concession card or are a temporary foster parent, you may be eligible for CSEF. A special consideration category also exists for asylum seeker and refugee families. The allowance is paid to the school to use towards expenses relating to camps, excursions or sporting activities for the benefit of your child.

The annual CSEF amount per student is:

- \$125 for primary school students
- \$225 for secondary school students.

### HOW TO APPLY

Contact the school office to obtain a CSEF application form or download from [www.education.vic.gov.au/csef](http://www.education.vic.gov.au/csef)

### MORE INFORMATION

For the CSEF application closing dates and more information about the fund visit [www.education.vic.gov.au/csef](http://www.education.vic.gov.au/csef)







## APPS CANTEEN



The Canteen is open each

**Monday, Wednesday, Thursday and Friday**

► The Canteen is **CLOSED** on Tuesdays ◄

Lunch orders are **NOT** available on Tuesdays

Current Menu/Pricelist is available on the school website – [www.amsleigh.vic.edu.au](http://www.amsleigh.vic.edu.au)

### CANTEEN HELPERS ROSTER MAY

Thursday 17<sup>th</sup> – Cassie

Friday 18<sup>th</sup> – Kath & Jess

Thursday 24<sup>th</sup> – Sharon

Friday 25<sup>th</sup> – Wendy & Jac

**We're always happy to have new people join our team of Canteen Helpers.**

**If you would like to volunteer on Thursdays or Fridays, please contact Dia on 0418 536 154. Thank you.**

**Respect - Integrity - Motivation  
Inclusion - Resilience**



### OPEN NIGHT

Wednesday 23rd May 2018

School tours with student leaders between 6.00pm - 7.00pm

Student performances at 7.00pm

17 State Street, Oakleigh East 3166

Tel: 9544 1553

Email: [amsleigh.park.ps@edumail.vic.gov.au](mailto:amsleigh.park.ps@edumail.vic.gov.au)

[www.amsleigh.vic.edu.au](http://www.amsleigh.vic.edu.au)

For a personal tour with the Principal,  
Michael Cornick, please phone **9544 1553**

To provide a safe, supportive and dynamic learning environment through high quality teaching that enables all students to be responsible, independent and resilient learners, well prepared for an evolving global future.

Our Best Always

## **APPS UNIFORM SHOP**

Located next to the general office

### **OPENING HOURS FOR 2018**

**TUESDAY & THURSDAY AFTERNOON: 3:30pm – 4:00pm**

**WEDNESDAY MORNINGS: 8:45am – 9:30am**

**(Copy of the approved uniform list is available at the uniform shop, the General Office and on our website [www.amsleigh.vic.edu.au](http://www.amsleigh.vic.edu.au))**

For any other queries, or to source second hand items, please visit the Uniform Shop during the above opening hours.

*A huge thank you to the families who donate second hand uniforms back to the school. We really appreciate the supply of good quality items to offer for sale at reduced prices.*

*Joanne & Kath*



### **WINTER ITEMS NOW AVAILABLE**

<b><u>CLOTHING ITEM</u></b>	<b><u>SIZE</u></b>	<b><u>PRICE</u></b>
Rain Coats - great for school camp!	4 – 6, 8 – 10, 12 – 14, S/M = 18	\$34.00 each
Winter Tights	4 – 6, 7 – 9, 10 – 12	\$7.00 pair
Beanies	Child or Adult sizes	\$5.00 each
Gloves	Small or Medium	\$5.00 pair
Scarves	One Size Fits All	\$5.00 each

## **Clean out the linen cupboard!**

The Nottinghill Neighbourhood House is in need of donations of pillowcases, tea towels, sheets or cotton fabric. This fabric will be up-cycled into reusable shopping bags by a group of volunteers.



Please leave donations with Joanne at the uniform shop or at the Notting Hill Neighbourhood House.

Thank you.







## SCHOOL BANKING

EVERY WEDNESDAY

AT APPS

For more information & account application forms, visit  
[www.commbank.com.au/schoolbanking](http://www.commbank.com.au/schoolbanking)

# KUMON



## TWO-WEEK FREE TRIAL

**Trial the Kumon English or Maths Programme over two weeks during May.**

Find out how we can develop in your child:

- calculation and reading ability
- concentration
- a daily study and reading habit
- the confidence to learn independently.

Just follow these four easy steps to register:

1. Call your Kumon Instructor to register for an information session.
2. Have your child assessed for the Kumon English or Maths Programme and discuss a study plan.
3. Arrange for your child to attend four consecutive class sessions during May.
4. Meet with your Instructor to discuss your child's Kumon experience.

**Contact your local Kumon Centre to register your child**

### KUMON OAKLEIGH EDUCATION CENTRE

Instructor: KAMY DE MEL

tel: 0418 585 300

#### TERMS AND CONDITIONS:

- Places are limited and acceptance for the Free Trial is on a first-come, first-serve basis.
- The registration deadline for the Free Trial varies across Kumon Centres.
- Attendance at an information session is mandatory prior to your child participating in the Kumon Free Trial.
- The Free Trial consists of four consecutive sessions at a Kumon Education Centre over two weeks during May.
- Worksheets are provided for non-centre days during the two weeks.
- Late registration may result in fewer study sessions.
- Class days, operating hours and available sessions vary across Kumon Centres.
- The Free Trial is available for one subject only (either English or Maths).
- There is no obligation to enrol after the Free Trial.

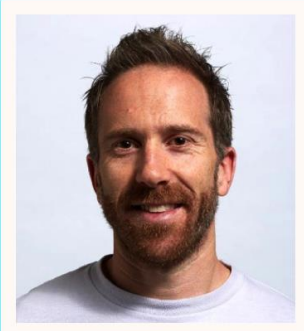
<http://au.kumonglobal.com>





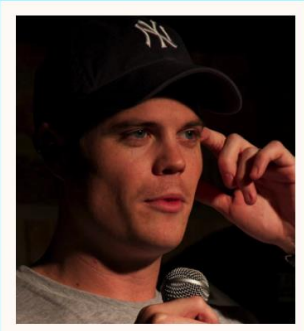
In support of:

**Amsleigh  
Park Primary  
School**



## Adam Rozenbachs

- Spicks & Specks, Mick Molloy's The Nation, Rove [live]
- Stand Up Australia, Headliners (The Comedy Channel)
- Hot Breakfast with Eddie McGuire, Mick Molloy and Luke Darcy
- Hughesy and Kate on Nova 100
- Opening act Dave Hughes and Adam Hills
- ★★★★ - "Fast paced, quality Stand Up" - Herald Sun
- "Think Jerry Seinfeld with a Black Heart" - The Age



## James Masters

- Brighton Comedy Festival (UK), Vancouver Fringe Festival
- Melbourne International Comedy Festival
- Vancouver Global TV Comedy Festival (2013)
- Strut TV's Tight 5 (Canada), Live on Bowen (Ch 31)

*"Genuinely, entertainingly hilarious. Best comedy gig I've seen in years."* – Herald Sun (4.5 stars)



## Adam Knox

- Melbourne International Comedy Festival
- Raw Comedy National Finalist, Class Clowns National Champion
- The Little Dum Dum Club
- "Perpetually scene-stealing" Chortle
- ★★★★★ - Funny Tonne



## Danielle Walker

- Raw Comedy 2016 National Champion
- 'So you think you're funny' (UK) Finalist
- 'The Comedy Zone' - Melbourne International Comedy Festival's top five best new comedians
- "Insane pay-offs, delivered with the unhinged laugh a Batman villain would be proud of." - Chortle UK

**Saturday 23 June 2018**  
**Thelma Bailey Learning and Sports Center**  
**Amsleigh Park Primary School**  
**17 State St, Oakleigh East**

**Tickets: \$35 at**  
**[comedyforacause.net/APPS](http://comedyforacause.net/APPS)**  
**Doors: 7pm / Show: 8pm**  
**(18+ only)**