



DIARY DATES

MAY

Thursday 16th - NAPLAN Grades 3 & 5
 Monday 20th - Annual General Meeting
 Wednesday 22nd - OPEN NIGHT
 Thursday 23rd - Grandparents' Day
 Friday 24th - Grade 5/6 Werribee Zoo Exc
 Monday 27th & Tues 28th Grade 5/6 Body Percussion Incursion
 Tuesday 28th - Friday 31st - BOOK FAIR
 Thursday 30th - Grade 1 Science Inc.
 Friday 31st - Grade 2 Science Inc.

TUESDAYS ARE NUDE FOOD DAYS

WEDNESDAY IS SCHOOL BANKING DAY

DUE BY DATES:

Wed 15th - G5/6 Camp, payment 2

Friday 17th - Application for Year 7 placement forms

Wednesday 22nd - G5/6 Body Percussion Incursion

COPIES OF ALL NEWSLETTERS, FORMS AND NOTICES ARE AVAILABLE ON OUR SCHOOL WEBSITE.

PRINCIPAL'S REPORT



Next week we will be celebrating Education Week and we hope to see you at APPS for one of the very exciting events we have planned. The theme for this year is 'Celebrating Careers', which always has great interest for children, as they one day dream of taking on exciting and interesting jobs. It may even be that they will do a job that has not even been invented or required yet, such as working on a base on Mars or designing and maintain new technologies.

Our timetable for Education Week includes:

Monday: Assembly performances

Tuesday: Careers Dress up Day – Come along dressed as your dream job. We are also looking forward to having some Mums and Dads along to talk about their careers.

Wednesday: Open night 5.30 PM – 7.00 PM – Science in Focus / Student Performances 7.00 PM to 7:45 PM.

Thursday: Grandparents Afternoon (12:00 PM – 1:50 PM)

It truly is a whole week of celebration to showcase all the wonderful things about Amsleigh Park and that we are a proud to be part of the Education State. All across the week there is something for everyone and we hope you enjoy the opportunities on offer. Many thanks to Ms Brown, Mr French, Mrs Spillane and Miss Wall who have planned this outstanding week for our school community.

Safety Week – Child Safe Standards in Focus

Next week is not only Education Week, but in term 2 this year it also coincides with Safety Week. As we have previously advised during Safety week we bring the Child Safe Standards into focus for our students. Everyone has the right to be safe and protected from abuse. As part of Safety week our students will be learning about keeping themselves safe, and if they have worries we will be encouraging them to seek help from a trusted adult. This is the responsibility of our whole school community, and we must all work together to ensure our children are safe from abuse. Our school policies make our position very clear on this and can be accessed using the following link. <https://amsleigh.vic.edu.au/governance/> Scroll to the bottom.

Annual General Meeting

The Annual General meeting to present the Annual for 2018 will be held on Monday 20th May at 6.30pm in the Theatre. All are welcome to attend. A copy of the Annual Report has been placed on our school website under the Governance TAB. Please RSVP to the office or via email or FelxiBuzz if you want to attend the AGM thanks. amsleigh.park.ps@edumail.vic.gov.au

Special Thanks

Many thanks to Miss Ryan who ran the wonderful 'Father's for Mother's day' event. It's a lovely idea for Dads and kids to get together to make something nice for 'Mum' and spending quality time together is always a big plus.

School Review 2019

In Term 1 we commenced on an in-depth evaluation process for our school as part of our whole school review in 2019. A School Review is undertaken every four years and follows a comprehensive Department of Education process. You might recall that we offered a number of parent forums seeking community input as part of this evaluation, which is now complete.

The next stage of our school review is called the 'Validation Day' and we will be joined on this day by a school reviewer, Mrs Olwen Horton, who is appointed by DET, two external challenge partners, Mrs Wilma Culton and Mr Rod McKinlay, who are principals from other schools and our school council president, Mr Greg Dellas. The input from our panel members is invaluable, bringing many years of experience and knowledge to the process. A number of our teaching staff including myself, Miss Bec Carr, Miss Johanne Abbott, Ms Jenny Brown, Miss Danielle Renwick, Mrs Terye Kennedy and Mrs Irene Arvanitis will also be involved in the school review panel on this day. On the validation day the panel will closely review the progress we have made in both our Strategic Plan 2016-2019 and also in meeting the 6 state-wide Education State priorities.

Following validation day our school reviewer will also undertake field work in our school, observing classes, running focus groups and interviewing students, parents and staff in order to gain a deep understanding of our progress. Once the field work is complete, we will undertake a final review day, at which we will decide what priorities the school will focus on in the next four years. Examples of these priorities could be anything from introducing new teaching approaches to managing student's social-emotional growth. These priorities will then be written into a new Strategic Plan, which will be shared widely in our school community. Our current Strategic Plan 2016-2019 plan is on our website under the governance TAB.

During the school review process we also undergo a comprehensive check of the School Registration standards, including the Child Safe Standards. It is vital that schools are compliant in these areas, and we must present a range of evidence to support the processes and policies we have in this area.

The school review process offers us a great opportunity to pause and reflect on our achievements over the past few years, whilst also developing areas of further improvement. As you would expect, everything we do as a school is focused on improving learning outcomes for our students, and the review process will build upon the work we have undertaken so far, and help us set directions for the future. It's an exciting time for all.

Please note: Due to our School Review day on Monday 27th May there will be no Monday morning assembly.

Attitudes to School Survey

Each year our grade 4-6 students have the opportunity to participate in the DET 'Attitudes to School Survey', sharing their perceptions on a range of areas. Connectedness to peers, classroom behaviour, engagement, help and support are just some of the areas students are asked about. The survey takes about 20 minutes to complete and is done during a class session. The data that we receive is analysed and we then identify areas we would like improve further. Students will be undertaking this survey over the next 2 weeks.

School Camping Program 2019

Preparations for this year's school camps is now well advanced, and our students are looking forward to this experience. For many students, school camps are a highlight of their school lives.

Many thanks to our Grade 3/4 staff who joined me in running the information night for Grade 3 and 4 parents about this year's camping program. Our staff undertake meticulous organisation to ensure the camp runs smoothly and that all children can enjoy an exciting and safe experience in a highly supported environment. This year our 3/4 camp is held at Camp Manyung, which offers an excellent standard of camping, and is run by the YMCA. We have attended this camp a number of times and it has some great outdoor education experiences for our students.

By coincidence all of our Grade 5/6s and 3/4s are heading off to camp in the same week in 2019, so from Wednesday – Friday the school will be very quiet, as only the Grade P-2 will be on-campus.

Our New Garden – Under Construction

Work is progressing well on our new landscape garden, and we expect that the first stage will be completed in about 4 weeks. The special features of the garden such as the new sandpit, garden beds, walking path, dry creek bed and light tunnel are now starting to take shape. Later next week we hope to see the concreting of the huge central mandala. Stage 2 of the project will happen once the concrete is fully cured, which involves the creation of the walking labyrinth within the mandala. Just in case you had not caught up with the original design I've included the design on page 5.

Hope to see you at Open Night next week,

Michael Cormick

Principal

Bec's Bulletin...

Book Fair Competition

In the lead up to our annual Book Fair, Helen, our librarian is running a competition in which students can win a \$20 voucher to spend on books at the book fair during the week of the 27th May. There are three sections of the competition, with a prize in each section:

- Prep-Grade 2 students: Design a book mark
- Grade 3-4 students: Design a poster promoting reading
- Grades 5-6 students: Create a book report for one of your favourite books



There will be templates available to assist student in each section of the competition from class teachers. Entries are due back by Friday 24th May to the entry box in the library. Winners will be notified on Monday 27th May. Please encourage your child to have a go and put themselves forward for a chance to win a great prize!

NAPLAN Testing Week



Our Grade 3's and 5's sat NAPLAN (National Assessment Program for Literacy and Numeracy) tests this week, including Reading, Writing, Language Conventions and Numeracy. NAPLAN testing provides a snapshot of how our students are performing in English and Mathematics at this point in time. NAPLAN results should not be considered in isolation. Students' NAPLAN results feed into our much broader assessment schedule and are just one of the regular range of assessments conducted by our classroom teachers. We monitor and track student learning over their time at Primary School and use all assessment data, including daily observations, to make an 'on balance' judgement of achievement at the time of student reports in June and December. Our NAPLAN results for 2019 will be available in Term 3.

We prepare our students for this testing and encourage them to give the testing their very best effort. Although we love to celebrate the English and Mathematics achievements of our students, we want to remind students and families that there are many things we value in our students that cannot be measured in NAPLAN. For example, NAPLAN doesn't measure a student's ability to creatively problem solve, be a good friend, their athletic ability, their creative arts abilities and more. We are lucky to have an amazing range of talented students at Amsleigh Park, who have strengths in all of these areas!

Year 6-7 Transition 2019-2020

An important reminder to our Year 6 families, that the 'Application for Year 7 Placement 2020' form, which all students, including those attending an independent school in 2020, must complete, is due back this **Friday 17th May**. Please ensure you have returned this form by the due date so your child's form may be sent to the relevant secondary school in a timely manner.

If Year 6 families have any queries about this process, please contact me at school and I'll be happy to answer your questions.



Allergy Aware School

A reminder to all families that we are an allergy aware school and ask for your support in not sending nut or nut products to school with your child/ren. It is important that we encourage this to reduce the risk of affected students having a life threatening anaphylactic reaction. We thank you for your support with this!

Allergy Aware School





Notification of Works Asphalt Works for Utilities Upgrade State St, Oakleigh East

Attention: Local Residents.

Please be advised that Roadsafe Asphalt will be undertaking asphalt works along State St, Oakleigh East between Huntingdale Rd and Dublin St.

To undertake these works safely a "FULL ROAD CLOSURE" of State St, is required from Huntingdale Rd to Dublin St.

- Hours 7am onwards

Works are scheduled to be undertaken on **Thursday 23/5/2019** and conclude on that day. * subject to weather and local conditions.



There will be no street parking on the North side of State St from Huntingdale Rd to Dublin St.

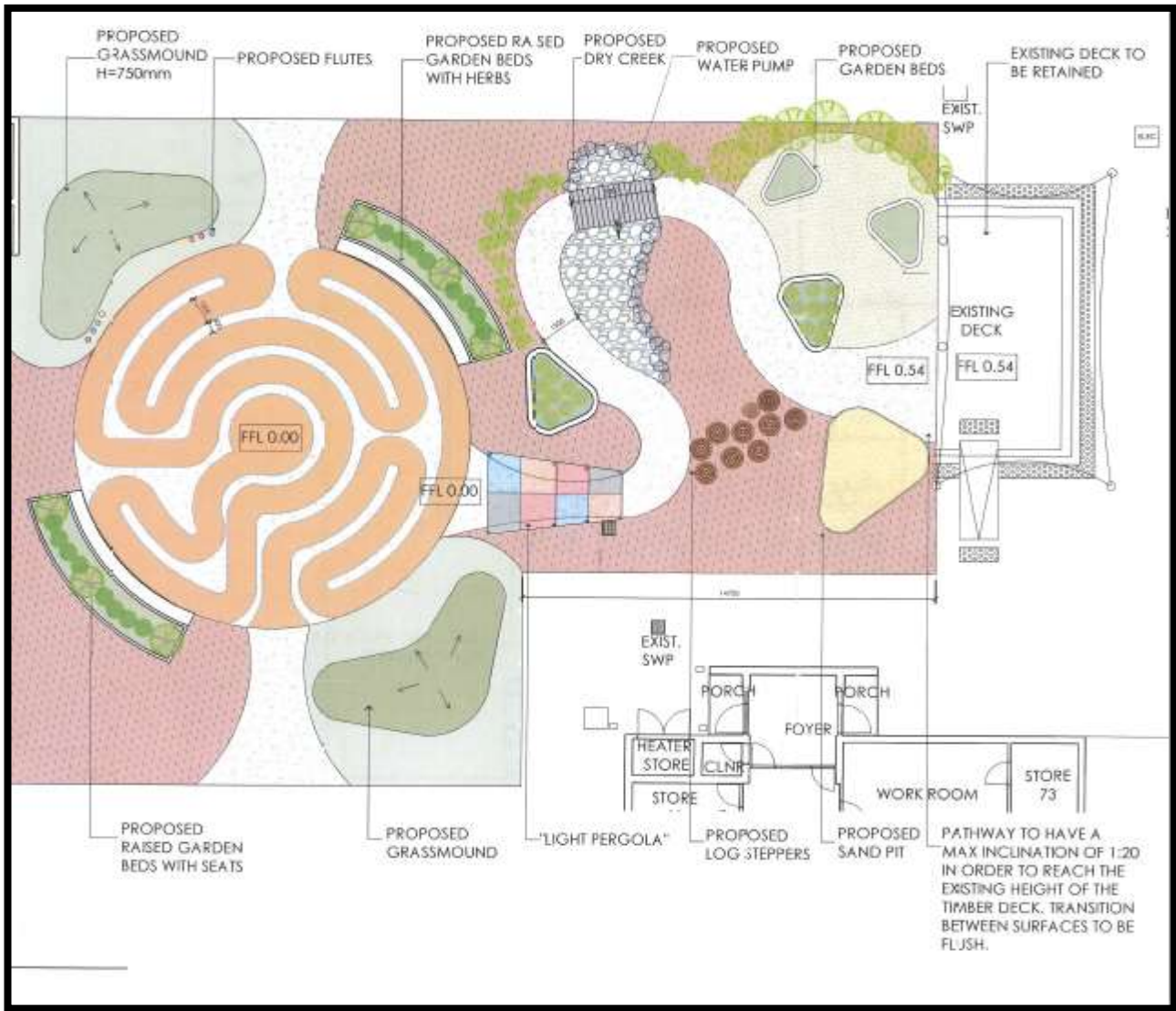
The work area will be under the control of qualified traffic controllers, ensuring that access by local residents and emergency services will be maintained in a safe and orderly manner.

Note: Work dates may change without prior notice, due to unforeseen circumstances.

Your co-operation and patience is much appreciated and for our part, we apologise for any inconvenience that these works may cause you.

Should you have any questions regarding the works please do not hesitate to contact us at enquiries@roadsafeasphalt.com.au

THE AMSLEIGH BUZZ



APPS UNIFORM SHOP

Located in the Thelma Bailey Learning & Sports Centre

OPENING HOURS FOR TERM 1 2019



MONDAY AFTERNOONS - 3:00PM - 3:45PM

WEDNESDAY MORNINGS - 8:45AM - 9:30AM

(Copy of the approved uniform list is available at the Uniform Shop, the General Office and on our website www.amsleigh.vic.edu.au)

For any other queries, or to source second hand items, please visit the Uniform Shop during the above opening hours.

A huge thank you to the families who donate second hand uniforms back to the school.

We really appreciate the supply of good quality items to offer for sale at reduced prices.

Joanne



SUMMER ITEMS

<u>ITEM</u>	<u>SIZES</u>	<u>PRICE</u>
Summer Dress	4 - 16	\$23.00 each
Cotton/Lycra Bike Shorts	4 - 16	\$12.00 pair
Boy Leg Briefs	4-6, 8-10, 12-14	\$ 8.00 pair
Short Sleeve Panelled Polo	4-16	\$26.00 each
Surf T-Shirt	4 - 16	\$15.00 each
Shorts - Cotton Rugby (unisex)	4 - 16	\$15.00 pair
Shorts - Gabardine Zip Pocket	4 - 16	\$17.00 pair
Slouch Hat	Small, Medium, Large, Extra Large	\$10.00 each

Second Hand Uniforms SALE

Wednesday 29th May 9:00 am – 10:00 am

at the Uniform Shop



Everything \$2

or

3 Items for \$5



**SCHOOL
BANKING**

EVERY WEDNESDAY

Bring your Bank Deposit Books
to Classroom Teachers

DEAR PARENT

NumberWorks'nWords can help your child reach greater heights with our expert after-school Maths and English tuition.

From Prep to Year 10, no matter whether they're struggling to keep up, or bursting to race ahead, NumberWorks'nWords promises to give your child's education – and confidence – a real boost.

Over the past 30 years, NumberWorks'nWords has achieved amazing results with thousands of children just like yours, by:

- tailoring lessons according to your child's individual needs
- setting achievable goals and keeping you updated on your child's progress.
- engaging your child with technology and resources developed by our own qualified experts
- using specialist, trained tutors who teach to the Australian Curriculum.

Right now NumberWorks'nWords is offering **FREE ASSESSMENTS** in Maths and English. These assessments provide a great opportunity for you to discover how your child is doing, collaborate on a plan to help them achieve their potential, and to see for yourself how effective – and enjoyable – NumberWorks'nWords specialist Maths tuition and English tuition really is.

**WITH OUR
EXPERT TUITION,
YOUR CHILDREN
CAN REACH
EVEN GREATER
HEIGHTS.**



Call today to book your free assessment, or to discuss any concerns you may have about your child's progress.

PH 9574 9964

Kind regards,
Rachael Mathews

1st Floor, 191 Coleman Parade, Glen Waverley

NumberWorks'nWords

Specialist Maths tuition
and English tuition

numberworksnnwords.com/au



**CENTRAL RINGWOOD COMMUNITY CENTRE
SUNDAY 2ND JUNE 2019**

THE AMSLEIGH BUZZ

This term South Oakleigh College is commencing a new Sports Development Program in Football and Soccer.

The Football/Soccer Development Program is aimed at all interested students in Years 7 – 12 and provides opportunities for boys and girls at the College to improve their strategic, tactical and physical skills through a specialist sports program.

All students, even those who have not played football or soccer before, will have the opportunity to develop their skills in a supportive environment. Students will receive expert training from legends of the game Kevin Sheedy & Archie Thompson, as well as learn skill development from our specially trained Sports staff.

This program will also run in 2020.



South Oakleigh College Sport Development Program in Football and Soccer

supported and mentored by
Kevin Sheedy and Archie Thompson.

Students receive expert training
and learn skill development from
our specialist coaching staff.

The program includes:

- Goal setting
- Sport nutrition
- Developing elite skills and knowledge
- Ongoing personal development
- Leadership

SOUTH OAKLEIGH
COLLEGE

