



DIARY DATES

JUNE

Tue 22 – SRC Ocean Dress Up Day – Gold Coin Donation

Wed 23 – Prep Chesterfield Farm Excursion

Thu 24 – Parent Teacher Interviews - Webex

Fri 25 – **LAST DAY TERM 2**
Early finish at 2.30pm

JULY

Mon 12 – TERM ONE BEGINS

**TUESDAYS
ARE NUDE FOOD DAYS @
APPS**

DUE BY DATES:

Fri 19th – Prep Chesterfield Farm Excursion permission forms

**COPIES OF ALL NEWSLETTERS,
FORMS AND NOTICES ARE
AVAILABLE ON
OUR SCHOOL WEBSITE.**

Principal's Report

It's Great to be Back!

It has been wonderful to welcome our students back to school this week and to see their happy and smiling faces. The students I spoke to on Friday said they really missed their friends and teachers, and were so happy to be back at school. There was a real buzz in the air on Friday, and I noticed that many parents had a relieved look on their faces as well. Our teaching and support staff were very excited themselves, and pleased that we could get back to the familiar and safe routines of school life.

I want to say thank you to all parents and carers for your ongoing support and cooperation during these challenging times. We all hope that we don't have to move back into the remote learning environment again, but we approach this with confidence knowing we can rely on the great partnerships between our teachers and parents. It has been one of the silver linings of the past 18 months, and we hope to continue to build on the connections between our whole school community.

Welcome Martin

We have a new Library Technician at our school, and I want to say welcome to Martin Van Dinteren, who has taken over this role recently. With such a beautiful library, it's important to have someone who keeps it organised, and to manage our book collection. Martin is looking forward to getting lots of new books purchased and catalogued, so they can be added to our collection. The Library is open during lunchtime on Mondays and Wednesdays, so students can enjoy relaxing in this space during this time. All classes also visit the library once each week with their classroom teacher, and borrow from our book collection.

SRC and Enviro-Stars Join Forces

Our student leadership groups have decided to work together on our next special effort day focusing on protecting our precious Ocean environments. To bring this into the spotlight, our students are being invited to dress up next Tuesday 22nd June. The dress up theme is anything to do with Oceans, so pirates, mermaids, fish/sea creatures, sailors, scuba divers etc. Students can also choose to wear clothes that are blue to represent the ocean on a beautiful summer's day. It's a gold coin donation to participate in this special day with all funds being raised for the Australian Marine Conservation Society. I'm looking forward to seeing the costumes on the day, should be fun!

Safety Message

We would like to remind everyone that the car park driveway in Oakleigh Street is not a drop off point for children. Concerns are raised with me from time to time about driver behaviour around our school, and this week a parent witnessed another car pull into the driveway in a dangerous way. With respect, we ask all parents to consider this when they drop off at school. No-one wants an accident to happen, so being super careful when driving around the school is essential. We are reliant on everyone in our community helping us with safety during drop off and pick up.

Arrival Time at School

Just a reminder to everyone that children should be arriving at school at 8.45am. Before this time there is no yard duty supervision, and if the weather is wet it's not always possible to let children in until teachers are in their classrooms. As teachers spend time preparing before school they are often away from their classrooms before 8.45am.

Mid-Year Reports – Information for Parents

Our teachers have been very busy in the past few weeks analysing mid-year assessments and writing student reports. Like most schools in Victoria, our reporting process includes two formal reports, one at mid-year and one in December. It takes many hours to prepare these reports, and our aim is to make sure they are easy to understand and provide a clear indication of each child's progress when assessed against the Victorian Curriculum. The report includes a table showing the current progress in a range of curriculum areas, a written comment related to personal qualities and two further, more detailed tables for English and Mathematics to show children's progress in recent learning. Reports are also included for each specialist program, with a description of the learning focus, and comments regarding children's progress. A sample of the table showing progress against the Victorian Curriculum is included below.

Learning Area		Level 3	Level 4	Level 5	Level 6	Level 7
English*	Reading and Viewing			●		
	Writing			●		
	Speaking and Listening			●		
Mathematics*	Number and Algebra			●		
	Measurement and Geometry			●		
	Statistics and Probability			●		

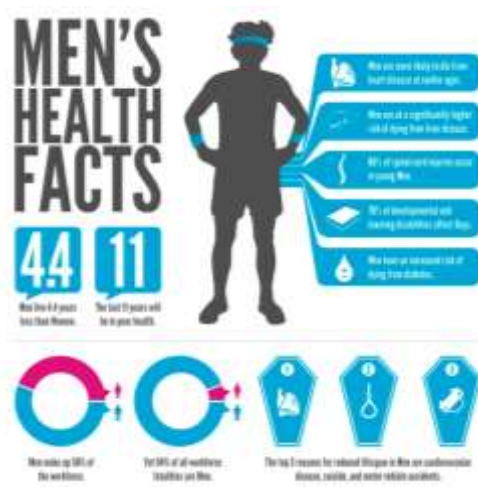
The blue dot indicates your child's progress at school. In this example, the child is achieving at the expected level. When the dot is on either side of the yellow band, the child is achieving at the expected level. A dot placed above the band shows when a child is above expected or below the band when achieving below expected.

As we have moved to XUNO in 2021 our students reports will be available via the XUNO parent portal on Thursday 24th June.

It's Men's Health Week

There's lots of special weeks these days, and in 2021 I wanted to share this one with all of the dads, granddads, step dads and uncles who might be connected to Amsleigh Park. In the busy world we live in it can be really hard to find time to think about your own health, so here's a bit of a starting point. Held from Monday 14 June to Sunday 20 June, Men's Health Week provides the opportunity to learn about men's health issues and take action to help improve health outcomes for men. Did you know that men are typically at higher risk of serious health outcomes, many of which are preventable with early intervention and diagnosis? Below are links to a number of resources to promote men's health and wellbeing.

- the [Healthy Male](#) website, for resources, tools and information about men's health
- the [Men's Health Information and Resource Centre](#)
- the [Head to Health: Supporting yourself – men](#) website
- [Beyond Blue](#), for information on depression and anxiety, advice for new dads and taking action to help make positive changes
- the [Better Health Channel](#) website
- [MensLine Australia](#), a free online counselling service and forum for men available by phone: 1300 78 99 78 or online chat. Available 24 hours a day, seven days a week
- [Dads in Distress](#), a peer support network for separated dads. Available Monday to Saturday, 8:30am to 5pm by phone: 1300 853 437
- [SANE Australia](#), providing support for people living with a mental illness. Available 10am to 10pm, Monday to Friday, by phone: 1800 187 263 or live chat



That's all for this week, please take care and stay safe.

Michael Cormick



FROM THE SCHOOL OFFICE...

Family Account Information

Each time a new fee (invoice) is processed to family accounts, (swimming, camp, etc) a statement will be sent home via email. You may notice two different types of credit notes listed on your statement. Regular credit notes can be applied to any outstanding invoices, including outstanding 2021 Essential Education Item fees. CSEF credit notes can only be allocated to invoices relating to camps, sports, excursions etc. All credit notes are shown with a negative symbol, -\$10.00. There may also be an unallocated receipt amount, this is also shown as a negative. These unallocated receipts are a result of a payment being made without the relevant paperwork handed in to notify us of what is being paid for.

2021 Fees & Charges – **Please carefully check if you have a credit /unallocated receipt amount on your family account that could be used to offset any outstanding fees. Please adjust your payment accordingly to avoid further overpayments.** BPay is the preferred method of payment, followed by credit/debit card. If you have any queries regarding your family account, please contact the office.

A reminder to please settle any outstanding fees as soon as possible. Let us know when you have made a BPay payment by sending an email to amsleigh.park.ps@education.vic.gov.au to advise us which fees are being paid so the correct receipt allocations can be made.

Absences / Late Arrivals

A reminder that all absences should be reported to the General Office. Admin staff process all attendance data, including late arrivals and early exits, teachers are informed during this process. Absences can be notified by Xuno, email or phoning the school and selecting 1 when prompted to leave an absence message. Students arriving late to school must be first signed in at the office by a parent before going to class. Parents should complete the sign in register, fill out a "Late Slip" and hand this to their child who will proceed on their own to their classroom and give the late slip to the teacher.

Student Medications

A reminder that a Medical Action Plan, completed by a doctor, must be provided for any student medication (eg. Ventolin, Epi Pens, severe allergy medication) stored at the school office. We cannot store or administer any medication without an Action Plan containing instructions from a doctor. This does not include occasional antibiotics. Wherever possible, parents should request antibiotic prescriptions that can be taken at home, ie Antibiotics that are required 3 times per day can be taken at home in the morning, on return from school and again at bedtime. For students that do require antibiotics at school, a parent must complete a medication authority form when handing medication into the office. It is recommended that students with hayfever etc. take their medication at home before school. All medication must be stored securely at the office for the safety of all students.

Contacting The School

When contacting classroom teachers or responding to their emails via Xuno, remember to double check the 'To' address. Several emails meant for classroom teachers are arriving in the Amsleigh Park PS inbox along with many other external emails. Replying to the school inbox may delay your communication being received by the classroom teacher in a timely manner. When responding to a teacher's email, refer to their email address that appears within their message and copy & paste this address into the address field.

Thank you,

Karen Hogan
Business Manager

2021 Term Dates

Term 2 – Monday 19th April – Friday 25th June

Term 3 – Monday 12th July – Friday 17th September

Term 4 – Monday 4th October – Friday 17th December



APPS UNIFORM SHOP

Located in the Thelma Baily Learning & Sporting Centre

OPERATING HOURS - TERM 2 2021

Monday morning - 8:45am - 9:30am
Tuesday afternoon - 3:00pm - 3:45pm

For counter sales, please pay first at the general office - credit card /eftpos payments preferred. Note that we do not offer "Tap" payments.

Emailed orders for new Uniform items are still accepted and encouraged.

Please download & complete a copy of our uniform shop order form and send to

amsleigh.park.ps@education.vic.gov.au

Any Back orders will be filled as soon as stock is available.

In the event of incorrect sizing, please return unworn items/s with tags intact, together with a note that includes the child's name, grade and the correct size required.

A copy of the current approved uniform list/order form is available on our website
www.amsleigh.vic.edu.au

Libby Jumas
Uniform Shop Co-Ordinator

SALE - WINTER ITEMS



<u>ITEM</u>	<u>SIZES</u>	<u>PRICE</u>
Discontinued Girls Bootleg Pants (Brand New) Approximately 40 pairs in various sizes	4 - 16	\$5.00
Discontinued Boy Leg Briefs - Twin Pack (Brand New) Approximately 15 Twin Packs	4-6, 8-10, 12-14	\$4.00
Only available from the Uniform Shop whilst stocks last No exchange or refunds available on these items		
Please see order form below for all other uniform shop items.		

THE AMSLEIGH BUZZ

AMSLEIGH PARK PRIMARY SCHOOL - UNIFORM SHOP ORDER FORM Effective Term 2, 2021

STUDENT NAME: _____ CLASS: _____ DATE: _____

APPROVED ITEM	COLOUR	\$ PRICE INC. GST	SIZE 4 QTY	SIZE 6 QTY	SIZE 8 QTY	SIZE 10 QTY	SIZE 12 QTY	SIZE 14 QTY	SIZE 16 QTY	TOTAL COST \$ (INC GST)	Office Use ✓ Date Supplied	
Short Sleeve Panelled Polo <u>SSP</u>	Navy/ Emerald	\$26.00										
Long Sleeve Panelled Polo <u>LSP</u>	Navy/ Emerald	\$28.00										
Surf T-shirt (No Collar) <u>STS</u>	Navy Size M-XL also avail	\$15.00										
Windcheater <u>WC</u> Size 6 - 14 Size 16	Navy	\$24.00 \$28.00										
Bomber Jacket <u>BJ</u> Size 4-14 Size 16	Navy/ Emerald	\$37.00 \$42.00										
Shorts - Cotton <u>CRS</u> Rugby (Unisex)	Navy	\$15.00										
Shorts- Gabardine Zip Pocket <u>GS</u>	Navy	\$17.00										
Track Pants <u>TPDK</u> Double Knee-Unisex Size 4-14 Size 16	Navy	\$23.50 \$27.00										
Girls Pants <u>SLP</u> Straight Leg Viscose/Nylon/Elastine	Navy	\$22.00										
Girls Skort Gab <u>SKTG</u> (Gabardine Fabric)	Navy	\$17.50										
<u>SKTC</u> Girls Skort - Cotton	Navy	\$17.50										
Summer Dress <u>SD</u>	Navy & White	\$23.00										
* Bike Shorts Cotton/Lycra <u>BS</u>	Navy	\$12.00										
* BoyLeg Briefs <u>BLB</u> Twin Pack	Navy	\$8.00	Size 4 - 6		Size 8 - 10		Size 12 - 14					
* Bike Shorts & Boy Leg briefs are to be worn UNDER a school dress only	Total From Over Page									\$		
TOTAL ORDER										\$		
Office Use Only											Office Use	
Receipt #											Cash / Cheque / Credit Card / EFT	\$

-----X-----

CREDIT CARD PAYMENT Student Name & Grade _____
MasterCard or Visa only DO NOT COMPLETE FOR A DEBIT / EFTPOS CARD - TAKE CARD TO GENERAL OFFICE FIRST FOR PROCESSING

Cardholders Name: _____ Card Expiry Date: ____/____/____

TOTAL \$ _____ Cardholder Signature: _____ FOR: UNIFORM PURCHASE

Cardholder Contact Phone Number: _____

Card No:

--	--	--	--	--

--	--	--	--	--

--	--	--	--	--

--	--	--	--	--

THE AMSLEIGH BUZZ

APPS UNIFORM SHOP ORDER FORM Effective Term 2, 2021

ITEM	COLOUR	PRICE INC GST	SIZE	QUANTITY	TOTAL \$ (INC GST)	Office Use ✓ Date Supplied
School Bag <u>SBAG</u>	Navy	\$35.00				
Art Smock <u>AS</u> Small Medium Large X-Large	Navy OR Emerald	\$15.00		Navy Emerald		
Book Bag <u>BB</u> <i>Not required for Preps</i>	Navy	\$8.00				
Slouch Hat <u>HAT</u> (Tick size req'd)	Navy	\$10.00	SMALL 55cm MED 57cm LGE 59cm XL 61cm			
Gloves – Small or Medium <u>G</u>	Navy	\$5.00	SMALL or MEDIUM	SMALL MEDIUM		
Winter Tights <u>WT</u> Sizes 3-5, 7-9, 10-12	Navy	\$7.00				
Beanie <u>B</u> Child / Adult	Navy	\$5.00 ea	Child / Adult	CHILD ADULT		
Scarf - one size <u>S</u>	Navy	\$5.00 ea	One size			
All items have been approved by Amsleigh Park Primary School Council – see Uniform Policy for further information.						
				TOTAL THIS PAGE \$ _____		

The uniform shop is located in the foyer of the Thelma Bailey Learning & Sporting Centre (Gym)

UNIFORM SHOP OPENING HOURS – Term 2 2021

Monday morning – 8:45am – 9:30am
Tuesday afternoon – 3:00pm – 3:45pm

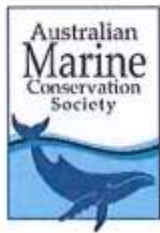
**Credit /Eftpos/Debit card payments must be made at the General Office
prior to collecting uniform items.**

ORDER FORMS ARE AVAILABLE ON THE SCHOOL WEBSITE
www.amsleigh.vic.edu.au

IF YOU DON'T NEED TO ATTEND THE UNIFORM SHOP IN PERSON DURING OPERATING HOURS, PLEASE PLACE AN ORDER AS PER THE FOLLOWING INSTRUCTIONS

1. Write child's name, grade and date of order at top of order form.
2. Indicate quantity of items required per size and total cost for each item.
3. Scan (PDF) and email this completed form to amsleigh.park.ps@education.vic.gov.au OR send an email directly to the school with your details, student name and grade, the items required and credit card details. Completed forms can also be dropped in to the General Office.
4. Order will be processed and uniform items and will be sent home with your child, orders are usually completed within one week (excepting unavoidable delays from the supplier). Any items not available at time of order will be placed on back order and provided as soon as possible.

SRC & Envirostars Ocean Dress Up Day



The SRC and Envirostars are passionate about raising awareness and supporting important causes. This Term, we have chosen to focus on protecting our oceans. The Australian Marine Conservation Society work hard to protect our oceans from pollution, climate change and other threats to sea life. To raise awareness and funds for this important cause we are holding an ocean-themed dress up day.

When: Tuesday 22nd June, 2021

What: Ocean-themed dress up and gold coin donation.
Bring a gold coin donation and come to school dressed as fish, sea creatures, mermaids, pirates etc.



Why: To raise funds and awareness for the Australian Marine Conservation Society.

Thank you for supporting the Envirostars and SRC with this very important cause. We can't wait to see everyone all dressed up!



Help us turn
BREAD BAGS into
SCHOOL PLAY EQUIPMENT



Our school is taking part in the Wonder Recycling Rewards campaign this term.

Help us collect bread bags so we can earn points to redeem on new RHSports equipment.

It's simple! All you need to do is keep your empty bread bags and send them to school with your kids! We will then place them in Wonder's pink collection box and post them off to be recycled. The more we collect the more points our school earns!

Collections close 25th June.

Tip for collecting:

Use one empty bread bag to collect a bunch of other bags.

Did you know

Our school is now in the draw to **WIN 1 of 5** exercise circuits made from the soft plastic we collect!

LET'S GET COLLECTING!



Tag Wonder on social [#wonderrecycling](#) to share all your recycling champion stories!



\$5 off
Simply use your club
promo code "JUL21"

3 BIG DAYS EASTER HOLIDAY BASKETBALL CAMPS

FOR BEGINNER BASKETBALL PLAYERS

Just started or thinking of playing basketball?

Join us at this camp for an introduction to the basics and fundamental skills of the game in an enjoyable learning environment.

Attend multiple days to learn different skills.

Our coaches will help build confidence in your game while having fun!

Suitable for boys / girls aged 6-12 years old. No prior experience needed.



Oakleigh Recreational Centre, 2 Park Rd, Oakleigh
Limited spots - please book your dates
and sessions online:

www.bballcamps.juiceboxboy.com.au

Enquiries please call 9095 6567

