



## DIARY DATES

### OCTOBER

**Mon 18** – Preps resume\*

**Thurs 21** – Grades 1 & 2 resume\*

**Tues 26** – Grades 3 & 4 resume\*

**Thurs 28** – Grades 5 & 6 resume\*

\*Please refer to the calendars on pages 3-5 for specific information about each year level.

**TUESDAYS  
ARE NUDE FOOD DAYS  
@ APPS**

## DUE BY DATES:

**COPIES OF ALL NEWSLETTERS, FORMS  
AND NOTICES ARE AVAILABLE ON  
OUR SCHOOL WEBSITE.**

### **From the Principal Team**

#### **Welcome Back**

A warm welcome to everyone in the Amsleigh Park community for Term 4. We hope you had a restful break and were able to take some time as a family. It was nice to be able to meet up with friends or family for a picnic and a chat. For our Melbourne supporters, we hope you are still basking in the glory of winning the penultimate game. Such a great result for the club and it's fans after a long time.

As we commence a term that will see us return to full onsite learning, we once again thank our community for the strength and resilience that has enabled the children to continue to learn and develop through these challenging times. It will be exciting for our students to see their friends and teachers. We are sure parents are looking forward to being able to send children to school. Our teachers are excited about reconnecting not only with the students but also with their colleagues.

'Reconnecting' via the school is something that has been highlighted over the past 18 months as being of great importance. This acknowledges the critical role schools play in providing the social fabric connecting local communities. There is nothing new in this; it is what is always at the heart of our work as educators and the role of schools in the local community. But the demands of this moment perhaps help us see the importance of what we do with more clarity. Never has it been more important that we provide the support our students need to strengthen their mental health and wellbeing. Connecting with a spending time with friends is a vital aspect of this and it will be a joy to see this unfold over coming weeks.

We would like to take this opportunity to wish everyone the very best for the term ahead, which I'm sure will have its challenges. Our staff have started working hard behind the scenes in preparation for the dual learning platforms that face the students (and staff) in the coming month. Please see more information over the page about our return to school planning.

#### **Victorian Government High Ability Program**

This year, the Victorian Government has continued to fund the Excellence Program, The Victorian High-Ability Program. Each year this program provides up to 48,000 high-ability students across Victoria in Years 5 to 8 (Year 5-6 at Amsleigh Park) at government schools, the opportunity to participate in a 10-week online extension and enrichment program, in English and Mathematics. The virtual program, delivered by Virtual School Victoria, focuses on extending and developing students' Mathematic and English abilities. The Department of Education has centrally managed the selection process for the program based on students' previous academic performance.

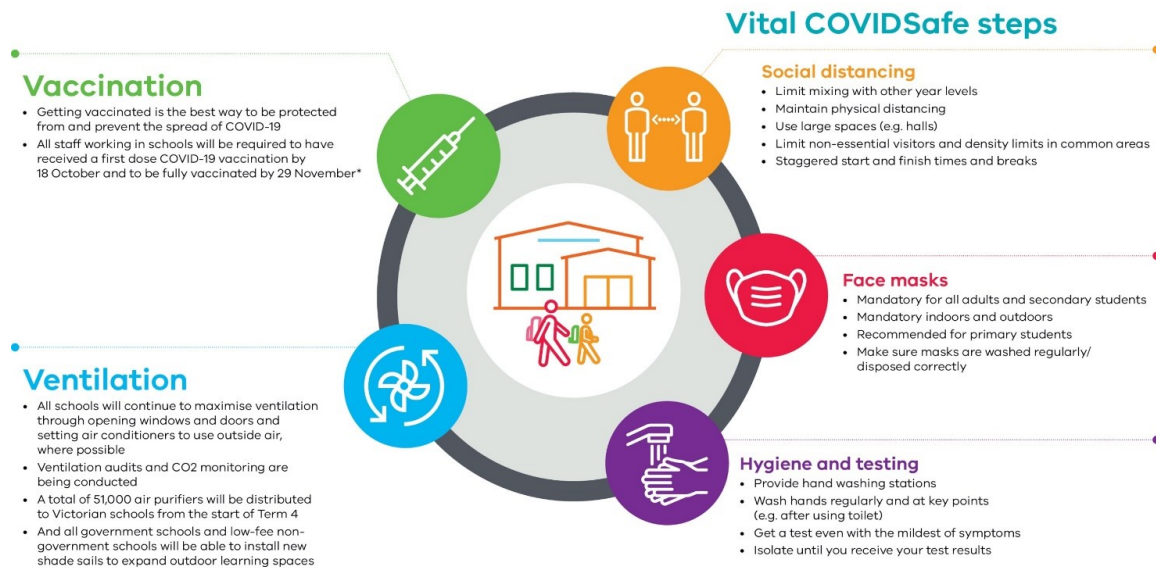
This term, we have nine students who have been selected to participate in the VHAP program. They have commenced their classes this week, remotely from home. Congratulations to the students who have been selected to be in the program, it is a huge credit to them and their academic achievements over their time at Primary School.

**VIRTUAL  
SCHOOL VICTORIA**

## Return to School Planning

We are feeling excited and optimistic about students return to school starting on Monday 18<sup>th</sup> October. After another long stretch of remote learning both students and staff are looking forward to reconnecting back at school. The staggered return to school commences on Monday 18<sup>th</sup> October. A copy of our special calendar developed for each year level which shows very clearly the days of on-site attendance and days of remote learning is included in this newsletter. As you might imagine there is a need for some clever planning as we handle the staggered return of grades on different days of the week. In addition to this we will also continue to provide on-site supervision for students in the same way we have done in Term 3. There are certainly some logistical challenges in this, but we will make it work.

In preparation for students returning to school the important job at hand is to put into place a range of measures that minimise risks to safety and wellbeing. The Department of Education and Training are working through this process with schools, setting clear guidelines to follow. DET have developed the following infographic known as the 'COVID Safe 3 Vs' to outline the various strategies for minimising the risks of COVID-19 in school communities.



Fortunately, one of the priorities of our school modernisation project was on incorporating natural ventilation into each classroom. The Junior Learning Centre showcases this as a strong design feature and each classroom has an external door and opening windows. With warmer days ahead, it will be possible to offer lots of natural ventilation in classrooms. In addition, we are also fortunate to have some wonderful shaded areas that can be used for learning outdoors when the weather allows for it. Classes will be able to access these areas for some of their learning time. Air purifiers will be used in some of the higher risk areas, and we await an allocation from the Department of Education and Training over the next few weeks.

## COVID-19 Vaccination for School Staff

The topic of COVID-19 vaccines has become a very common topic of conversation amongst the community and is often in the media. You may be aware that the government has mandated coronavirus vaccinations for teachers, so this avoids any need for parents to ask our staff upon the return to onsite learning about this matter. All staff must be vaccinated by this time or have a booking for a final vaccination. Whilst students aged 12 and over are now eligible to receive a COVID19 vaccine, please note that vaccination is not mandatory for primary school students at this time.

## Term 4 is Sun Smart

As you get the uniforms out once again make sure you locate your child's school hat. As UV levels are now increasing we expect that all children will wear a hat when outdoors. If you happen to need a new hat they can be ordered from the uniform shop. Please email the school or contact the office to place an order and we'll make sure the kids get their hats ASAP. Please note that a peaked baseball cap does not meet the criteria for Sunsmart, and the hat must protect the face, ears and back of neck. Sunscreen can be worn at school, and children need to have a personal supply.

Stay safe, stay well and stay connected,

*Michael Cormick & Bec Carr*

Amsleigh Park Principal Team



## Prep Term 4 Calendar

Term 4	Monday	Tuesday	Wednesday	Thursday	Friday	Saturday	Sunday
Week 1	4 Remote Learning	5 Remote Learning	6 Wellbeing Wednesday	7 Remote Learning	8 Remote Learning	9	10
Week 2	11 Remote Learning	12 Remote Learning	13 Wellbeing Wednesday	14 Remote Learning	15 Remote Learning	16	17
Week 3	18 Back to APPS!!	19 Onsite Learning	20 Onsite Learning	21 Remote Learning	22 Fine-tuning Friday- Prep rest day	23	24
Week 4	25 Onsite Learning	26 Onsite Learning	27 Onsite Learning	28 Remote Learning	29 Remote Learning	30	31
Week 5	1 Curriculum Day	2 Melbourne Cup Holiday	3 Onsite Learning	4 Remote Learning	5 Onsite Learning	6	7
Week 6	8 Onsite Learning	9 Onsite Learning	10 Onsite Learning	11 Onsite Learning	12 Onsite Learning	13	14

## Grade 1 & 2 Term 4 Calendar

Term 4	Monday	Tuesday	Wednesday	Thursday	Friday	Saturday	Sunday
Week 1 October	4 Remote Learning	5 Remote Learning	6 Wellbeing Wednesday	7 Remote Learning	8 Remote Learning	9	10
Week 2 October	11 Remote Learning	12 Remote Learning	13 Wellbeing Wednesday	14 Remote Learning	15 Remote Learning	16	17
Week 3 October	18 Remote Learning	19 Remote Learning	20 Wellbeing Wednesday	21 Back to APPS!!	22 Onsite Learning	23	24
Week 4 October	25 Remote Learning	26 Remote Learning	27 Remote Learning	28 Onsite Learning	29 Onsite Learning	30	31
Week 5 November	1 Curriculum Day	2 Melbourne Cup Holiday	3 Remote Learning	4 Onsite Learning	5 Onsite Learning	6	7
Week 6 November	8 Onsite Learning	9 Onsite Learning	10 Onsite Learning	11 Onsite Learning	12 Onsite Learning	13	14

# THE AMSLEIGH BUZZ

## Grade 3 & 4 Term 4 Calendar



Term 4	Monday	Tuesday	Wednesday	Thursday	Friday	Saturday	Sunday
Week 1 OCT	4 Remote Learning	5 Remote Learning	6 Wellbeing Wednesday	7 Remote Learning	8 Remote Learning	9	10
Week 2 OCT	11 Remote Learning	12 Remote Learning	13 Wellbeing Wednesday	14 Remote Learning	15 Remote Learning	16	17
Week 3 OCT	18 Remote Learning	19 Remote Learning	20 Wellbeing Wednesday	21 Remote Learning	22 Remote Learning	23	24
Week 4 OCT	25 Remote Learning	26 Back to APPS!!	27 Onsite Learning	28 Remote Learning	29 Remote Learning	30	31
Week 5 NOV	1 Curriculum Day	2 Melbourne Cup Holiday	3 Onsite Learning	4 Remote Learning	5 Onsite Learning	6	7
Week 6 NOV	8 Onsite Learning	9 Onsite Learning	10 Onsite Learning	11 Onsite Learning	12 Onsite Learning	13	14

## Grade 5 & 6 Term 4 Calendar



Term 4	Monday	Tuesday	Wednesday	Thursday	Friday	Saturday	Sunday
Week 1 OCT	4 Remote Learning	5 Remote Learning	6 Wellbeing Wednesday	7 Remote Learning	8 Remote Learning	9	10
Week 2 OCT	11 Remote Learning	12 Remote Learning	13 Wellbeing Wednesday	14 Remote Learning	15 Remote Learning	16	17
Week 3 OCT	18 Remote Learning	19 Remote Learning	20 Wellbeing Wednesday	21 Remote Learning	22 Remote Learning	23	24
Week 4 OCT	25 Remote Learning	26 Remote Learning	27 Remote Learning	28 Back to APPS!!	29 On-site Learning	30	31
Week 5 NOV	1 Curriculum Day	2 Melbourne Cup Holiday	3 Remote Learning	4 Onsite Learning	5 Onsite Learning	6	7
Week 6 NOV	8 Onsite Learning	9 Onsite Learning	10 Onsite Learning	11 Onsite Learning	12 Onsite Learning	13	14

## FROM THE SCHOOL OFFICE...

### Family Account Information

A reminder to please settle any outstanding fees as soon as possible. Let us know when you have made a BPay payment by sending an email to [amsleigh.park.ps@education.vic.gov.au](mailto:amsleigh.park.ps@education.vic.gov.au) to advise us which fees are being paid so the correct receipt allocations can be made.

Please carefully check if you have a credit note/unallocated receipt amount on your family account that could be used to offset any outstanding fees. Please adjust your payment accordingly to avoid further overpayments. BPay is the preferred method of payment, followed by credit/debit card. If you have any queries regarding your family account, please contact the office.

### Student Medications

A reminder that a Medical Action Plan, completed by a doctor, must be provided for any student medication (eg. Ventolin, Epi Pens, severe allergy medication) stored at the school office. We cannot store or administer any medication without an Action Plan containing instructions from a doctor. This does not include occasional antibiotics. Wherever possible, parents should request antibiotic prescriptions that can be taken at home, ie Antibiotics that are required 3 times per day can be taken at home in the morning, on return from school and again at bedtime. For students that do require antibiotics at school, a parent must complete a medication authority form when handing medication into the office. It is recommended that students with hayfever etc. take their medication at home before school. All medication must be stored securely at the office for the safety of all students.

### Absences / Late Arrivals

A reminder that all absences should be reported to the General Office. Admin staff process all attendance data, including late arrivals and early exits. Teachers are notified of the absence/late arrival during this process. Absences can be advised using Xuno, email or phoning the school and selecting "1" when prompted to leave an absence message. **Students arriving late to school must be first signed in at the office by a parent before going to class.** Parents should complete the sign in register, fill out a "Late Slip" and hand this to their child who will proceed on their own to their classroom and give the late slip to the teacher.

### Contacting The School

When contacting classroom teachers or responding to their emails via Xuno, remember to double check the 'To' address. Several emails meant for classroom teachers are arriving in the Amsleigh Park PS inbox, along with many other daily external emails. Replying to the school inbox may delay your communication being received by the classroom teacher in a timely manner. When responding to a teacher's email, refer to their email address that appears within their message and copy & paste this address into the address field.

Thank you,

Karen Hogan  
Business Manager



### 2021 Term Dates

**Term 4** – Monday 4<sup>th</sup> October – Friday 17<sup>th</sup> December

## APPS UNIFORM SHOP

Located in the Thelma Baily Learning & Sporting Centre

### OPERATING HOURS – TERM 3 2021

**SEE BELOW**

~~Monday morning 8:45am – 9:30am~~

~~Tuesday afternoon 3:00pm – 3:45pm~~

For counter sales, please pay first at the general office - credit card /eftpos payments preferred.  
Note that we do not offer “Tap” payments.

### **Emailed orders for new Uniform items are still accepted and encouraged.**

Please download & complete a copy of our uniform shop order form and send to  
[amsleigh.park.ps@education.vic.gov.au](mailto:amsleigh.park.ps@education.vic.gov.au)

Any Back orders will be filled as soon as stock is available.

In the event of incorrect sizing, please return unworn items/s with tags intact, together with a note that includes the child’s name, grade and the correct size required.

A copy of the current approved uniform list/order form is available on our website  
[www.amsleigh.vic.edu.au](http://www.amsleigh.vic.edu.au)

Libby Jumas  
Uniform Shop Co-Ordinator

## SALE - WINTER ITEMS



<u>ITEM</u>	<u>SIZES</u>	<u>PRICE</u>
Discontinued Girls Bootleg Pants (Brand New) Approximately 40 pairs in various sizes	4 – 16	\$5.00
Discontinued Boy Leg Briefs - Twin Pack (Brand New) Approximately 15 Twin Packs	4-6, 8-10, 12-14	\$4.00
Only available from the Uniform Shop whilst stocks last No exchange or refunds available on these items		
Please see order form below for all other uniform shop items.		



## AMSLEIGH PARK PRIMARY SCHOOL - UNIFORM SHOP ORDER FORM

Effective Term 3, 2021

STUDENT NAME: \_\_\_\_\_ CLASS: \_\_\_\_\_ DATE: \_\_\_\_\_

APPROVED ITEM	COLOUR	\$ PRICE INC. GST	SIZE 4 QTY	SIZE 6 QTY	SIZE 8 QTY	SIZE 10 QTY	SIZE 12 QTY	SIZE 14 QTY	SIZE 16 QTY	TOTAL COST \$ (INC GST)	Office Use ✓ Date Supplied
Short Sleeve Panelled Polo <u>SSP</u>	Navy/ Emerald	\$26.00									
Long Sleeve Panelled Polo <u>LSP</u>	Navy/ Emerald	\$28.00									
Surf T-shirt (No Collar) <u>STS</u>	Navy Size M-XL also avail	\$15.00									
Windcheater <u>WC</u> Size 6 - 14 Size Small (16)	Navy	\$24.00 \$28.00									
Bomber Jacket <u>BJ</u> Size 4-14 Size Small (16)	Navy/ Emerald	\$37.00 \$42.00									
Shorts - Cotton Rugby (Unisex) <u>CRS</u>	Navy	\$15.00									
Shorts- Gabardine Zip Pocket <u>GS</u>	Navy	\$17.00									
Track Pants <u>TPDK</u> Double Knee-Unisex Size 4-14 Size 16	Navy	\$23.50 \$27.00									
Girls Pants Straight Leg <u>SLP</u> Viscose/Nylon/Elastine	Navy	\$22.00									
Girls Skort Gab <u>SKTG</u> (Gabardine Fabric)	Navy	\$17.50									
Girls Skort - Cotton <u>SKTC</u>	Navy	\$17.50									
Summer Dress <u>SD</u>	Navy & White	\$23.00									
* Bike Shorts Cotton/Lycra <u>BS</u>	Navy	\$12.00									
Art Smock	Navy	\$15.00	Small		Medium		Large				
* Bike Shorts are only to be worn UNDER a school dress.			Total From Over Page							\$	
			TOTAL ORDER							\$	
Office Use Only Receipt #										Cash / Cheque / Credit Card / EFT \$	Office Use

CREDIT CARD PAYMENT Student Name & Grade \_\_\_\_\_  
MasterCard or Visa only DO NOT COMPLETE FOR A DEBIT / EFTPOS CARD - TAKE CARD TO GENERAL OFFICE FIRST FOR PROCESSING

Cardholders Name: \_\_\_\_\_ Card Expiry Date: \_\_\_\_/\_\_\_\_/\_\_\_\_

TOTAL \$ \_\_\_\_\_ Cardholder Signature: \_\_\_\_\_ FOR: UNIFORM PURCHASE

Cardholder Contact Phone Number: \_\_\_\_\_

Card No:

--	--	--	--	--

--	--	--	--	--

--	--	--	--	--

--	--	--	--	--

## APPS UNIFORM SHOP ORDER FORM

Effective Term 3, 2021

ITEM	COLOUR	PRICE INC GST	SIZE		QUANTITY		TOTAL \$ (INC GST)	Office Use ✓ Date Supplied
School Bag <u>SBAG</u>	Navy	\$35.00						
Book Bag <u>BB</u> <i>Not required for Preps</i>	Navy	\$8.00						
Slouch Hat <u>HAT</u> (Tick size req'd)	Navy	\$10.00	SMALL 55cm	MED 57cm	LGE 59cm	XL 61cm		
Gloves <u>G</u>	Navy	\$5.00	4-6		7-10	12-16		
Winter Tights <u>WT</u> Sizes 3-5, 7-9, 10-12	Navy	\$7.00						
Beanie <u>B</u> Child / Adult	Navy	\$5.00 ea	Child / Adult		CHILD	ADULT		
Scarf - one size <u>S</u>	Navy	\$5.00 ea	One size					
All Uniform items have been approved by Amsleigh Park Primary School Council – see Uniform Policy for further information.								
					TOTAL THIS PAGE \$ _____			

The uniform shop is located in the foyer of the Thelma Bailey Learning & Sporting Centre (Gym)

### UNIFORM SHOP OPENING HOURS – Term 3 2021

Monday morning – 8:45am – 9:30am

Tuesday afternoon – 3:00pm – 3:45pm

**Credit / Eftpos / Debit card payments must be made at the General Office prior to collecting uniform items.**

ORDER FORMS ARE AVAILABLE ON THE SCHOOL WEBSITE

[www.amsleigh.vic.edu.au](http://www.amsleigh.vic.edu.au)

**IF YOU DON'T NEED TO ATTEND THE UNIFORM SHOP IN PERSON DURING OPERATING HOURS, PLEASE PLACE AN ORDER AS PER THE FOLLOWING INSTRUCTIONS**

1. Write child's name, grade and date of order at top of order form.
2. Indicate quantity of items required per size and total cost for each item.
3. Scan (PDF) and email this completed form to [amsleigh.park.ps@education.vic.gov.au](mailto:amsleigh.park.ps@education.vic.gov.au) OR send an email directly to the school with your details, student name and grade, the items required and credit card details. Completed forms can also be dropped in to the General Office.
4. Order will be processed and uniform items will be sent home with your child, orders are usually completed within one week (excepting unavoidable delays from the supplier). Any items not available at time of order will be placed on back order and provided as soon as possible.



## UNIFORM SHOP - TEMPORARILY CLOSED

Until further notice, and easing of restrictions, our uniform shop will be temporarily closed for on-site purchases, however orders for new uniform items can be emailed to the school. Please download and complete a copy of our uniform shop order form, available from our website, [www.amsleigh.vic.edu.au](http://www.amsleigh.vic.edu.au)

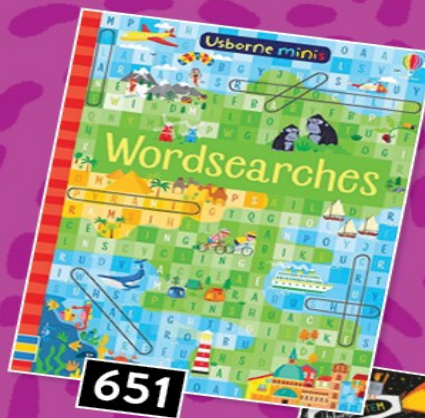
Note that the only payment method available is credit/debit card. Orders will need to be emailed to the school no later than 3:30pm each Monday. All orders will be filled on Tuesdays, then delivered to your child's classroom. In the event of incorrect sizing, please return, unworn item/s with tags intact, together with a note that includes the child's name, grade and the correct size required.

Thank you.

Libby Jumas  
Uniform Shop Co-Ordinator

# Book Club

Special  
Home  
Edition  
**OUT NOW!**



651



003



637

300  
PIECES



SCHOLASTIC



## ParentZone Term 4 2021

**Online parenting programs \* Free of Charge \* Bookings Essential**

### **Dads Matter**

**Dates:** Wednesdays 20th Oct to 24th Nov 2021

**Time:** 7.00pm to 9.00pm

A program for dads to better understand the importance of their role in the lives of their children  
Contact Julia on 9721 3629 or 0400 866 495

### **Emotion-Focused Parenting**

**Dates:** Mondays 18th Oct to 29th Nov 2021

**Time:** 7.00pm - 9.00pm

Explores emotional intelligence and supports parents to deal with challenging behaviors  
Contact Julia on 9721 3629 or 0400 866 495

### **Living with Autism**

**Dates:** Thursdays 21st Oct to 25th Nov 2021

**Time:** 10.00 am to 12.00 noon

Support for parents living with a child with Autism to explore parenting strategies  
Contact Joanne on 97213632 or 0428 296 573

### **Parenting Preschoolers**

**Dates:** Wednesdays 27th Oct to 1st Dec 2021

**Time:** 10.00am - 12.00pm

For parents of preschoolers to better understand their child, learn positive discipline strategies, improve communication and develop resilience  
Contact Laurie at [laurie.arrowsmith@anglicarevic.org.au](mailto:laurie.arrowsmith@anglicarevic.org.au)

### **Raising Resilient Kids**

**Dates:** Thursday 21st Oct 21st to 25th Nov 2021

**Time:** 1.00 to 3.00 pm

For parents of school-aged children. Explores strategies to help children bounce back from adversity, cope with change and deal with anger, and anxiety.  
Contact Sharon at [Sharon.Muir@anglicarevic.org.au](mailto:Sharon.Muir@anglicarevic.org.au)

### **Safe & Respectful Program**

**Contact:** Michelle on 0438 646 744 for dates / times

A supportive space for parents to consider strategies to support children in developing identity, sexuality, sexual health, and relationships.

### **Strengthening Parents Support Program**

**Contact:** Michelle on 0438 646 744 for dates / times

Monthly peer support groups for parents who have a child with a disability or developmental delay.

### **Talking Teens**

**Dates:** Wednesdays Oct 20th to Nov 24th 2021

**Time:** 7.00 to 9.00 pm

For parents of 12 to 18-year-olds. topics include teen behavior, dealing with feelings, communication improving relationships, and resolving family disputes.  
Contact Sharon at [Sharon.Muir@anglicarevic.org.au](mailto:Sharon.Muir@anglicarevic.org.au)

**Further enquiries:** [parentzone.eastern@anglicarevic.org.au](mailto:parentzone.eastern@anglicarevic.org.au)

# PARENTZONE





## Parenting Workshops and Webinars

2 hour sessions \* Free of Charge \* Bookings Essential

### Alleviate your Child's Anxiety

**Monday 15th November 2021**

**Time: 7:00 pm to 8:30 pm**

**For parents of children 5 to 12-year olds**

Discover the causes of anxiety and learn a parent-led approach to alleviating your child's worries.

Learn the skills of resilience, and strategies to help your child obtain a more resilient mindset.

Email Laurie to register your interest:

[laurie.arrowsmith@anglicarevic.org.au](mailto:laurie.arrowsmith@anglicarevic.org.au)

### Learn to Play, Play to Learn

**Monday, November 1st 10:00 to 12:00 pm**

**For parents of children 0 to 5-year-olds**

Understand how young children's play supports early learning and development. Discover a variety of free and low-cost activities to engage your child at home

Bookings: [Click here](#)

Enquiries: [sharon.muir@anglicarevic.org.au](mailto:sharon.muir@anglicarevic.org.au)

### Setting Boundaries

**When: Monday 22nd November**

**Time: 7:00 pm to 9:00 pm**

**For parents of children 5 to 12-year-olds**

Discover how to work together to develop clear boundaries with school-aged children and what to do when boundaries are challenged.

Bookings: [Click here](#)

Enquiries: [sharon.muir@anglicarevic.org.au](mailto:sharon.muir@anglicarevic.org.au)

### Teens and their Screens

**When: Wednesday 1st December 2021**

**Time: 7.00 pm to 9:00pm**

**For parents of children 0 to 5-year-olds**

An interactive webinar to explore strategies to encourage young people to balance screen time and real life. Support in how to establish clear screen time rules together

Bookings: [click here](#)

Enquiries: [sharon.muir@anglicarevic.org.au](mailto:sharon.muir@anglicarevic.org.au)

Further enquiries: [parentzone.eastern@anglicarevic.org.au](mailto:parentzone.eastern@anglicarevic.org.au)

## PARENTZONE