



DIARY DATES 2022

MARCH

Mon 14 – Labour Day Public Holiday

Thurs 17 – Coffee Morning

Thurs 24 – Colour Slime Run

Mon 28 – Fri 8 April – Whole School swimming program

APRIL

**Fri 8 – Last Day Term 1
Early finish at 2.30pm**

**TUESDAYS & THURSDAYS
ARE NUDE FOOD DAYS
@ APPS**

DUE BY DATES:

Mon 7th – Swimming Payment & all related paperwork

**COPIES OF ALL NEWSLETTERS ARE
AVAILABLE ON
OUR SCHOOL WEBSITE.**

From the Principal Team

Dr Suess's Birthday

Our Library Technician, Martin, was nowhere to be found on Wednesday this week, and instead we enjoyed a surprise visit by 'The Cat in the Hat!' The mischievous Cat shared his World-famous story with our Preps, who were enthralled with the visit. Later that day, the Cat in the Hat also hosted a story time session in our school Library and was joined by lots of our students who all love stories by Dr Suess. The whole event was to celebrate Dr Suess's Birthday and we had so much fun that it could become another great Amsleigh tradition. I want to thank Martin for organising this special visit, it's just a shame he could not be there to enjoy it! 😊 And of course, Happy Birthday to Dr Suess!



SRC and Enviro-stars, Ready to Go!

At a recent assembly we presented the badges for this year's Enviro-stars and student representative council (SRC) for 2022. Congratulations to our members for this year, we hope that you enjoy bringing your voice and ideas to our school. Members of these groups meet on a fortnightly basis and work together to help Amsleigh Park to be a great place for our students. The idea of having student voice is one way we can build a sense of ownership for our students, whilst also building their confidence to contribute to our community. Members also represent their class and must report back on the latest news from each group. We are looking forward to seeing their work in action in 2022.

COVID 19 Safety

As a school community we continue to work together effectively to keep our kids at school and minimise any spread of COVID 19. We are very grateful for the support of all parents and carers to implement the various strategies. One thing I would like to remind everyone is not sending children to school when they are unwell or have any cold or flu type symptoms, such as a cough or runny nose. Even if your child has undertaken a negative rapid test, they still need to stay home until the symptoms have cleared up. We ask for your support with this as students showing any symptoms will be sent home anyway.

In the instance where a child has persistent hay fever or residual symptoms it helps us if you consult with your GP and ask how it can be managed. Some GPs are happy to provide a letter to give to the school to explain this, which we find reassuring. It's not easy for us as we don't want to inconvenience families, but in the interests of wellbeing at school we need to be consistent.



Annual Swimming Program 2020

17 State Street, Oakleigh East, 3166 Phone (03) 9544 1553

www.amsleigh.vic.edu.au amsleigh.park.ps@education.vic.gov.au

THE AMSLEIGH BUZZ

Preparations are now well advanced for the annual swimming program for 2022. Our program will be conducted in the Doug Ellis Pool at Monash University who offer an excellent range of pool facilities for beginners to more advanced swimmers. Learning to swim and building water safety skills is vital for every Australian child, as we are a nation that enjoys water sports. Offering the option of a school program is also very convenient for families.

Last day for return of swimming notices and payments is Monday 7th March. This year we will not be accommodating any late notices and payments. In fairness to the pool and their staff we need to give them accurate bookings, so the right number of teachers are organised. Students who do not attend stay at school to undertake alternative learning.

Please remember to also return the Swimming Experience Questionnaire. (One for each child swimming). We are also currently looking for volunteers to support staff in the swimming program, please let your child's teacher know if you can help. You need to have a current 'Working with Children check' to do so. Volunteers can get a WWCC for free. Volunteers also need to be prepared to wear a mask throughout the event, as this is also required of teaching staff.

Swimming normally runs very smoothly, but if any parents have questions or concerns during the swimming program, please raise them with me at school rather than talk to the pool staff. We are in close communication with the pool all throughout the program and can communicate any matters with them as needed.



School Refunds Policy

It's understandable that parents and carers might have mixed feelings in committing their child to attend swimming and camps in 2022, as there is the risk a child might get sick and not be able to attend. Like any event planned in advance, it may be that when the time comes something gets in the way.

This is where the question of refunds come into focus. Our school has a clearly stated refund policy which outlines that we can only provide a refund if the money has **not** already been spent/committed. For example, when a person pays for swimming, but misses a few days, we cannot provide a refund for these days missed. This is because the pool still charges us for the instructor as they must still pay their own staff. We have also booked a bus, and this still needs to be paid. However, if there is any portion of the payment this is not expended, we will provide a refund. Hopefully, you can see this is fair as the school simply does not have the funds to act as insurance for financial loss.

This means it is up to parents and carers in deciding whether they would like their child to participate in the optional events we offer such as camps and swimming. We will work hard to negotiate with the providers of these events and help to minimise the potential for loss of funds, but inevitably this will happen. We do not want parents to be angry with us in any instance when this happens, so we are being upfront and completely transparent about it in advance.

If you have any questions about our policy, please check it out in full on our website or contact me at school with any questions.

Mobile Phone Policy

Mobile phones are banned in all Victorian Government Schools. Students are not allowed to use phones during school hours, and in keeping with the policy at our school, must hand their phones into the office when they arrive at school. Students are not allowed to store phones in bags or classrooms unless it is required for a medical purpose. Students are also not allowed to take photos before school or post any images from school on their personal social media.

School Communications Policy

In this edition of the Amsleigh Buzz we have included information from our School Communications policy that might be of great use to parents and carers. It outlines who to contact on different matters such as the classroom teacher, year level coordinators and the Principal Class team.

From the Assistant Principal...

The Resilience Project - Evening of March 9



A reminder to all families that we have our Resilience Project Parent Webinar next week, on Wednesday March 9th from 6.30pm-8.00pm.

We hope many parents will be able to attend to enjoy a positive experience for their mental health and also learn about supporting their child/ren's mental health. We hope to see you at the event, hosted by Resilience Project founder, Hugh van Cuylenberg. Attendance is free, but parents must register to attend to receive the link for the event. To register, please see:

https://us02web.zoom.us/webinar/register/WN_BSZQ7j8bQ5qAA7dfV6PgHQ

THE AMSLEIGH BUZZ

Coffee Morning

We are so looking forward to hosting our first 'Coffee Morning' for 2022, later this term! We'd like to invite all parents and carers to come along before school on Thursday 17th March, from 8:00am-9:00am, to enjoy a tea, coffee, or hot chocolate with the parent community in the school grounds. It will be great to have lots of parents back onsite. Maria from 'Barista on the Move' will be serving our hot drinks. If you BYO a reusable cup, you will receive a 50c discount. We hope to see you there.



Reading Nights



Nightly reading not only develops a child's reading skills, but also their writing and spelling skills; as well as growing a love of reading over time. Last week at assembly, we celebrated the first group of children to have read for 50 nights this year, a fabulous effort!

We encourage all students to keep up their reading every night. We expect that all children read for a minimum of 200 nights this year as part of their homework and to ensure their reading skills continue to develop. I look forward to celebrating the next group of '50 reading nights' certificates at assembly this week. It was excellent to hear about all the reading that has already happened this year!

And Finally....

We would like to say that it's been a great start to 2022. There have been some cases of COVID at our school, but overall this has only provided minimal disruption to our learning program. I acknowledge that it is hard to have to stay home for 7 days if a child becomes infected, and in fact I'm doing that very thing right now. But, in the interests of keeping our school, and all schools, open and thriving we all need to play our part.

We want to sincerely thank our parents and carers, students and staff for the part they are playing in helping to make the school year as normal as possible. From rapid testing to wearing masks, keeping kids home while sick and practising hygiene skills, it all contributes to maintaining a happy, healthy and safe community.

Michael Cormick
PRINCIPAL

Bec Carr
ASSISTANT PRINCIPAL



Communicating with Amsleigh Park Primary School

Amsleigh Park Primary School is committed to good communication and treating everyone according to our school values of respect, integrity and inclusion. It is important to remember that everyone in the school community should work together in the spirit of cooperation and understanding and should conduct themselves in a respectful, calm and courteous manner. All members of the school community are bound by the requirements of this policy.

If you have a concern then here's what you can do:

- Matters that are best addressed by the classroom teacher or specialist teacher may include: individual student needs, academic progress, assessment, behaviour and discipline issues, non-attendance at school and challenging or changing family circumstances.
- Matters that are best addressed by the principal or team leaders may include: school facilities, school fees and charges, student reporting, school policy, dress codes and/or serious discipline issues. The principal will also be available, by appointment, to speak to parents about any other concerns they may have and wish to raise with a more senior member of staff.

Who should I make contact with?

Normally your child's classroom teacher is the best person to get in contact with; however, there may be times when it's appropriate to seek a staff member in a leadership role such as the following staff:

Principal Team

Mr Michael Cormick – Principal

Miss Bec Carr – Assistant Principal

Team Leaders

Miss Danielle Renwick (Prep)

Miss Khalia Barker (Grade 1&2)

Miss Jenny Brown (Grade 3&4)

Mrs Irene Arvanitis (Grade 5&6)

Mrs Terye Kennedy (Specialist Leader)

Miss Emily Tapper (SWPBS)

Admin

Mrs Karen Hogan (Business Manager)



Do I need to make an appointment to speak to a teacher?

Normally you need to make an appointment to speak with one of the staff if the matter requires a discussion like a parent-teacher interview. Teaching staff are generally available after school most nights except for Monday and Wednesday, which are routine meeting nights for all teachers. Making an appointment also puts the teacher in the best position to give you their full attention without compromising their duty of care to students.

What if it's just a quick message?

Passing on a quick message is normally OK, but it should happen outside of teaching time, as the teacher must always maintain their duty of care to students.

What if the matter is urgent?

If the matter is more urgent and concerns **student wellbeing or safety** in particular, then teachers are usually contactable for a brief chat/phone call before 8.45am. If the classroom teacher is not available then the Assistant Principal should be contacted. The Principal can also help to address urgent matters if other staff are not available.

Do I need an appointment to see a teacher leader?

Yes, if the matter requires more than a 'quick message' and is not urgent then you should contact the office to make an appointment to speak with the Principal, Assistant Principal or Team Leaders. We will always do our best to undertake this appointment in a timely manner.

Does the school have an 'open door' to parent concerns?

Yes, most definitely, and the purpose of this newsletter article is to provide a clear idea about how a parent might go about this, and who to contact.

We hope you find this a useful guide in communicating with the school.

Amsleigh Park PS

News from the PFA

PFA Committee and AGM 2022

The Amsleigh Park Primary School PFA AGM is coming up on Wednesday 16th March, 2022. At this meeting all office bearer positions shall be declared vacant at the AGM and shall be open to any Financial Member of the PFA. Office bearers will be elected to office for a period of 12 months or until the next AGM.

If you would like to join the APPS PFA, nominate for a PFA Committee position or just attend the AGM, please read through the following pages and complete any relevant forms for you and return to the school.

We look forward to welcoming many new parents to our PFA in 2022.

Hot Cross Bun Drive - Easter

Once again this year Bakers Delight will be supporting APPS with an Easter Hot Cross bun drive. Hot Cross Buns will cost \$8.00 for a 6 pack, with \$3.00 from each pack sold returned to the school. Envelopes for orders will be sent home in the next few weeks and all stock will be distributed back to families via the school on Thursday 7th April.



COLOUR SLIME SPECTACULAR FUN RUN

By now all students should have brought home the information for our Colour Slime Spectacular on March 24th. If you have not received a fundraising booklet, please ask at the front office.

On the afternoon of Thursday March 24th, all students will have the opportunity to enjoy a fun run around the school oval, climbing over and under obstacles and of course, being slimed with a non-toxic, biodegradable slime.

We are asking if any families might have any equipment at home that might make a fun contribution to the obstacle course for the kids. Anything large and waterproof that might make a fun obstacle would be gratefully received.

The slime will be shot out of foam water guns and we are inviting any parents who might enjoy sliming a few children to join us. Spare hands will be very welcome from 1pm until 3.30pm, but ensure you dress in some old clothes – you may just have the SLIME of your life!

Please note, as always, anyone joining us for the event will need to be at least double vaccinated and a QR code will be provided at the event to register your attendance.

If you think you have something to offer, please drop us a note to:
apps.parents@gmail.com

THANKING YOU ALL IN ADVANCE!

**The PFA AGM is Wednesday 16th March at 7pm in the After School Care room.
All welcome!**

FROM THE SCHOOL OFFICE ADMIN TEAM.....

Family Account Information

Thanks to the families that have paid 2022 Parent Contributions. Please ensure **a completed Payment Advice is sent to the office** so invoices can be processed, and payments allocated correctly.

A copy of the 2022 Parent Contributions letter & payment advice is available on our website. www.amsleigh.vic.edu.au

Student Medications

A reminder that a Medical Action Plan, completed by a doctor, must be provided for any student medication (eg. Ventolin, Epi Pens, severe allergy medication) stored at the school office. We cannot store or administer any medication without an Action Plan containing instructions from a doctor. This does not include occasional antibiotics. Wherever possible, parents should request antibiotic prescriptions that can be taken at home, ie Antibiotics that are required 3 times per day can be taken at home in the morning, on return from school and again at bedtime. For students that do require antibiotics at school, a parent must complete a medication authority form when handing medication into the office. It is recommended that students with hayfever etc. take their medication at home before school. All medication must be stored securely at the office for the safety of all students.

Absences / Late Arrivals

A reminder that all absences should be reported to the General Office. Admin staff process all attendance data, including late arrivals and early exits. Teachers are notified of the absence/late arrival during this process. Absences should be advised using Xuno, email or phoning the school and selecting "1" when prompted to leave an absence message. **Students arriving late to school must be first signed in at the office by a parent before going to class.** Parents should complete the sign in register, fill out a "Late Slip" and hand this to their child who will proceed on their own to their classroom and give the late slip to the teacher.

Contacting The School

When contacting classroom teachers, or responding to their emails via Xuno, remember to double check the 'To' address. Many emails meant for classroom teachers are arriving in the Amsleigh Park PS inbox, along with many other daily external emails. Replying to the school inbox may delay your communication being received by the classroom teacher in a timely manner. When responding to a teacher's email, refer to their email address that appears within their message and copy & paste this address into the address field.

Thank you,

Karen Hogan
Business Manager





Xuno Information for families

Amsleigh Park PS uses Xuno as our main communication tool with families, including newsletter distribution, absence notifications, student reports, communication with your child's teacher, messages and reminders; and coming soon, permission forms and online payments.

Xuno is a web-based school management software that has a website portal for use in a browser and an App, 'Xuno Family' for use on smart phones or tablets.

It is easy to use and is a vital tool to keep our parents informed about their child/ren's school life and all things happening at Amsleigh Park.

Bookings for "Get to Know You" & Parent Teacher interviews are also managed through Xuno. Parents can use Xuno to notify the school of any address/contact detail changes, absences, late arrivals etc.

For new families - On enrolment, you should have received a welcome email from Xuno (please check your junk folder if not received in your inbox), with information on how to create your Xuno account. Please follow the instructions and links in the email, to create a Xuno account and password in your browser.

As Xuno is our main communication tool, it is important that all families are signed up so they are aware of our school information and events. Please contact the office if you require a Xuno welcome email to be resent.

2022 Camps, Sports and Excursions Fund applications

The Camps, Sports and Excursions Fund helps eligible families cover the costs of school trips, camps and sporting activities, including school swimming programs.

If you have a valid means-tested concession card, such as a Veterans Affairs Gold Card, Centrelink Health Care Card or Pensioner Concession Card, or are a temporary foster parent, you may be eligible. There is also a special consideration category for asylum seeker and refugee families.

Payment amounts this year are \$125 for eligible primary school students. Payments are made directly to the school to use towards expenses relating to camps, excursions and sporting activities for the benefit of your child.

If you applied for CSEF through our school last year, you do not need to complete an application form this year, unless there has been a change in your family circumstances. ie, new student to add

If you would like to apply for the first time, please contact the school office on 9544 1553 to request an application form. A copy of your eligible card will also be required to submit your application.

You can find out more about the program and eligibility, on the Department of Education and Training's Camps, Sports and Excursions Fund web page.

Check with the school office if you are unsure, and please return completed forms to the school office as soon as possible.

Thank you,

Amsleigh Admin Team

APPS UNIFORM SHOP

Located in the Thelma Baily Learning & Sporting Centre

OPERATING HOURS – TERM 1 2022

Over the Counter Sales Not Currently Available - * See below

~~Monday morning – 8:45am – 9:30am~~

~~Tuesday afternoon – 3:00pm – 3:45pm~~

*** Email orders for new Uniform items to the general office – credit/debit card payments only**

Please download & complete a copy of our uniform shop order form and send as a PDF to
amsleigh.park.ps@education.vic.gov.au

Any Back orders will be filled as soon as stock is available.

In the event of incorrect sizing, please return unworn items/s with tags intact, together with a note that includes the child's name, grade and the correct size required.

A copy of the current approved uniform list/order form is available on our website
www.amsleigh.vic.edu.au

Libby Jumas
Uniform Shop Co-Ordinator

UNIFORM SHOP – TEMPORARILY CLOSED

Until further notice, our uniform shop will be temporarily closed for on-site purchases, however orders for new uniform items can still be filled and delivered to classrooms.

If unable to download a copy of our uniform shop order form, either from the web page or below, please email the office directly with your order details including your name and contact number, child's name, grade, the name of the uniform items, quantity and sizes required.

Note that the only payment method available is debit/credit card. You can either provide your card details in your order email, or phone them through to the office. We do not store credit/debit card details, any correspondence containing credit/debit card details is shredded immediately after processing.

Thank you,

Admin Team

THE AMSLEIGH BUZZ

AMSLEIGH PARK PRIMARY SCHOOL - UNIFORM SHOP ORDER FORM Effective Term 1, 2022

STUDENT NAME: _____ CLASS: _____ DATE: _____
 DELIVER ORDER TO CLASSROOM ☐ OR COLLECT FROM OFFICE ☐

APPROVED ITEM	COLOUR	\$ PRICE INC. GST	SIZE 4 QTY	SIZE 6 QTY	SIZE 8 QTY	SIZE 10 QTY	SIZE 12 QTY	SIZE 14 QTY	SIZE 16 QTY	TOTAL COST \$ (INC GST)	Office Use ✓ & Date Supplied
Short Sleeve <u>SSP</u> Panelled Polo	Navy/ Emerald	\$26.00									
Long Sleeve <u>LSP</u> Panelled Polo	Navy/ Emerald	\$28.00									
Surf T-shirt <u>STS</u> (No Collar)	Navy Size M-XL also avail	\$15.00									
Windcheater <u>WC</u> Size 6 -14 Size Small (16)	Navy	\$24.00 \$28.00									
Bomber Jacket <u>BJ</u> Size 4-14 Size Small (16)	Navy/ Emerald	\$37.00 \$42.00									
Shorts -Cotton <u>CRS</u> Rugby (Unisex)	Navy	\$15.00									
Shorts- Gabardine <u>GS</u> Zip Pocket	Navy	\$17.00									
Track Pants <u>TPDK</u> Double Knee-Unisex Size 4-14 Size 16	Navy	\$23.50 \$27.00									
Girls Pants <u>SLP</u> Straight Leg Viscose/Nylon/Elastine	Navy	\$22.00									
Girls Skort Gab <u>SKTG</u> (Gabardine Fabric)	Navy	\$17.50									
Girls Skort - Cotton <u>SKTC</u>	Navy	\$17.50									
Summer Dress <u>SD</u>	Navy & White	\$23.00									
** Bike Shorts <u>BS</u> Cotton/Lycra	Navy	\$12.00									
Art Smock <u>AS</u>	Navy	\$15.00	Small		Medium		Large				
** Bike Shorts are only to be worn UNDER a school dress.			Total From Over Page							\$	
			TOTAL ORDER							\$	
Office Use Only Receipt #											Office Use Credit Card / EFT \$

CREDIT CARD PAYMENT Student Name & Grade _____
 MasterCard or Visa only - Submit to General Office prior to collecting Uniform Order

Cardholders Name: _____ Card Expiry Date: ____/____/____

TOTAL \$ _____ Cardholder Signature: _____ FOR: UNIFORM PURCHASE

Cardholder Contact Phone Number: _____

Card No:

--	--	--	--	--

--	--	--	--	--

--	--	--	--	--

--	--	--	--	--

APPS UNIFORM SHOP ORDER FORM

Effective Term 1, 2022

ITEM	COLOUR	PRICE INC GST	SIZE		QUANTITY		TOTAL \$ (INC GST)	Office Use ✓ Date Supplied
School Bag <u>SBAG</u>	Navy	\$35.00	N/A					
Book Bag <u>BB</u> <i>Not required for Preps</i>	Navy	\$8.00	N/A					
Slouch Hat <u>HAT</u> (Tick size req'd)	Navy	\$10.00	SMALL 55cm	MED 57cm	LGE 59cm	XL 61cm		
Gloves <u>G</u>	Navy	\$5.00	4-6		7-10	12-16		
Winter Tights <u>WT</u> Sizes 3-5, 7-9, 10-12	Navy	\$7.00						
Beanie <u>B</u> Child / Adult	Navy	\$5.00 ea	Child / Adult		CHILD	ADULT		
Scarf - one size <u>S</u>	Navy	\$5.00 ea	One size					
All Uniform items have been approved by Amsleigh Park Primary School Council – see Uniform Policy for further information.								
					TOTAL THIS PAGE \$ _____			

The uniform shop is located in the foyer of the Thelma Bailey Learning & Sporting Centre (Gym)

UNIFORM SHOP OPENING HOURS - TERM 1 2022 - TO BE CONFIRMED

Monday morning – 8:45am – 9:30am

Tuesday afternoon – 3:00pm – 3:45pm

Credit /Eftpos/Debit card payments must be made at the General Office
prior to receiving uniform items.

ORDER FORMS ARE AVAILABLE ON THE SCHOOL WEBSITE

www.amsleigh.vic.edu.au

**IF YOU DON'T NEED TO ATTEND THE UNIFORM SHOP IN PERSON DURING OPERATING HOURS,
PLEASE PLACE AN ORDER AS PER THE FOLLOWING INSTRUCTIONS**

1. Write child's name, grade and date of order at top of order form.
2. Indicate quantity of items required per size and total cost for each item.
3. Scan (PDF) and email this completed form to amsleigh.park.ps@education.vic.gov.au OR send an email directly to the school with your details, student name and grade, the items required and credit card details. Completed forms can also be dropped into the General Office.
4. Order will be processed and uniform items and will be sent home with your child, orders are usually completed within one week (excepting unavoidable delays from the supplier). Any items not available at time of order will be placed on back order and provided as soon as possible.



APPS Second Hand Uniforms

- Tuesday 8th March
- On the Prep Deck
 - If raining - TBLSC (gym) foyer
- 3:15pm - 3:45pm
- Items between \$2.00 - \$5.00

FINANCIAL ASSISTANCE INFORMATION FOR PARENTS

Every Victorian child should have access to the world of learning opportunities that exist beyond the classroom. The Camps, Sports and Excursions Fund helps ensure that no student will miss out on the opportunity to join their classmates for important, educational and fun activities. It is part of making Victoria the Education State and the Government's commitment to breaking the link between a student's background and their outcomes.

CAMPS, SPORTS & EXCURSIONS FUND (CSEF)

School camps provide children with inspiring experiences in the great outdoors. Excursions encourage a deeper understanding of how the world works while sports teach teamwork, discipline and leadership. All are a part of a healthy curriculum.

CSEF is provided by the Victorian Government to assist eligible families to cover the costs of school trips, camps and sporting activities.

If you hold a valid means-tested concession card or are a temporary foster parent, you may be eligible for CSEF. A special consideration category also exists for asylum seeker and refugee families. The allowance is paid to the school to use towards expenses relating to camps, excursions or sporting activities for the benefit of your child.

The annual CSEF amount per student is:

- \$125 for primary school students
- \$225 for secondary school students

MORE INFORMATION

For more information about CSEF visit:

<https://www.education.vic.gov.au/about/programs/Pages/csef.aspx>

HOW TO APPLY

New applicants should contact the school office to obtain a CSEF application form or download from the website below.

If you applied for CSEF at your child's school last year, you do not need to complete an application form this year unless there has been a change in your family circumstances.

You only need to complete an application form if any of the following changes have occurred:

- **new student enrolments;** your child has started or changed schools this year.
- **changed family circumstances;** such as a change of custody, change of name, concession card number, or new siblings commencing this year.

Check with the school office if you are unsure.



Nude Food Days

Every Tuesday & Thursday

Let's help the environment & reduce the amount of unnecessary litter around our school.

Nude Food Tips:-

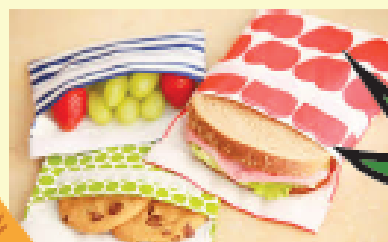
Buy in bulk, use lunch boxes with compartments and reusable containers eg. yoghurt tubs and take away containers

Make your own snacks & prepare them in advance

Choose reusable water bottles

Bring fruit - it has it's own wrapper!

Use bees wax wraps instead of plastic wrap



Zac
Addison
Oliver
Tulotti
Victoria
Rollan

James
Christian
Hope-Rose
Vasili
Niko
Lara

Luke
Lili
Rajveer
Alex
Ben
Terrence



to our students celebrating their
special day in March

Lucia
Lilly
Imethya
Mia
Nevenka
Sofia
Christaian

Pavlos
Stanley
Tyler
April
Elizabeth
Raina

THE AMSLEIGH BUZZ



Dear Parent/Guardian

The APPS PFA are very excited to announce we will be running a **COLOUR SLIME SPECTACULAR FUN RUN** for all students towards the end of Term 1. All proceeds raised will go towards our target of \$20,000 to support the school with projects such as more shade sails and repainting the Prep-2 playground.

Students obtain donations from family and friends, earn exciting reward prizes according to the amount of money raised, and end in a blast of colour and slime!

**The COLOUR SLIME SPECTACULAR FUN RUN will be held on
Thursday March 24th 2022.**

On this date we ask all students to bring a spare change of clothes to school, most importantly a plain white shirt. The slime is made of high quality water-based, non-toxic ingredients. It is biodegradable, gluten-free, skin safe and environmentally friendly.

How Does My Child Fundraise?

Each child will receive a Fundraising Booklet which will assist in raising funds for the school. Please read through the booklet and get familiar with the great incentives to be earned along the way.

Your fundraising journey begins by creating a login at australianfundraising.com.au and creating your profile page. Share this page and you will be off and running in no time.

If your child does not receive a booklet, please see the school office.

The more money you raise, the more prizes you earn!

Students who earn as little as \$10 will receive a prize, and then the more you earn, the more prizes you will win. There are 15 great prizes to collect as well as a whole bunch of MonstAr Madness prizes for completing separate stages online. The booklet details everything on offer and how to earn it!

Cash Donations

Has someone donated cash to your fundraising effort? No problem!

Just complete the page on the back of the booklet with the details of the donation and return this form with the cash in a marked envelope to the school office by Wednesday 23rd March for it to be added to your online total.

How to collect your prizes and rewards

All prizes and incentive rewards will be delivered to the school just after the Colour Slime Spectacular Fun Run and be delivered to your child's classroom.

More information

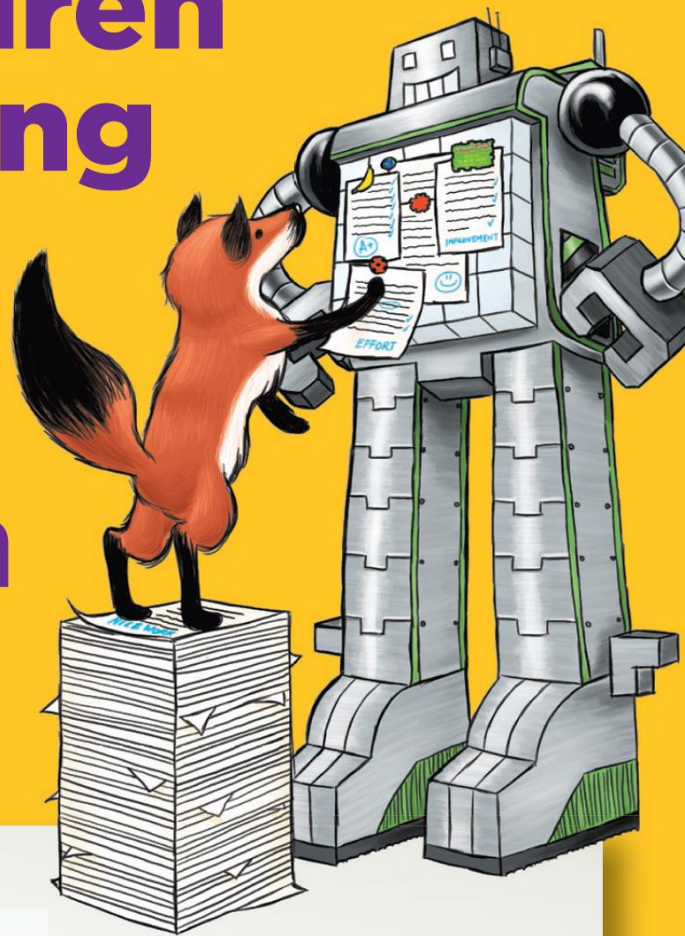
Further details regarding the Fun Run will be provided in the week leading up to the event, but in the meantime if you have any fundraising questions, please email us at apps.parents@gmail.com

Thank you in advance for your participation, and get ready to have
THE SLIME OF YOUR LIFE!!

Happy fundraising!
From the PFA

**Your children
are amazing
already.**

**We just
help them
prove it.**



**From Prep to Year 10
NumberWorks'nWords English and Maths tuition is
tailored to bring out the best in Aussie students by:**

- personalising lessons according to individual needs
- boosting confidence and improving results
- using qualified tutors who teach to the school curriculum
- providing feedback on your child's progress towards their goals

numberworksnwords.com/au

Glen Waverley Ph 9574 9964

**NumberWorks
'nWords**

TUITION
CONFIDENCE
RESULTS

**ENGLISH
& MATHS**
**Free assessment
Book now!**



Steve Dimopoulos MP

State Member for Oakleigh District

**Proudly
Local**

Clean up Australia Day 2022

**SUNDAY 6 MARCH
10AM - 12PM**

**DAVIES RESERVE
OAKLEIGH SOUTH**

EQUIPMENT PROVIDED.

**FREE BBQ LUNCH PROVIDED AT
12PM.**

RSVP TO:

STEVE.DIMOPOULOS@PARLIAMENT.VIC.GOV.AU



GIRL GUIDES

COME TRY OUR UNIT!

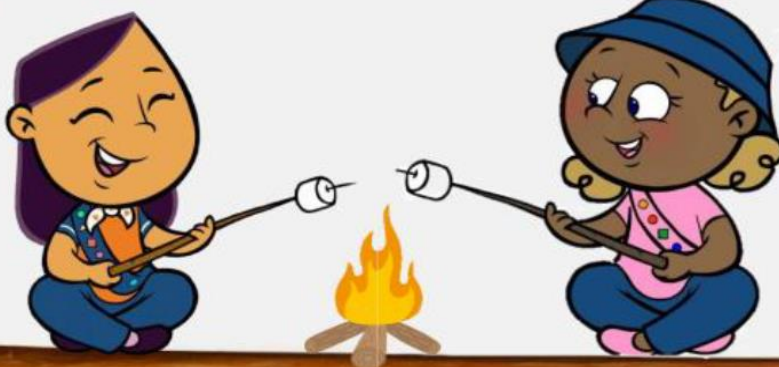
2nd Mt. Waverley Rainbow Fairy Girl Guides

Guiding is an all-access pass to tonnes of fun and new experiences. Girls aged 5-8 will have hours of adventure and discovery, countless confidence-building moments and the opportunity to make a difference in the world around us.

Come try our unit for free: Tuesday 8th March 5.30 – 7pm

For more information please contact:

Becc Lark 0408 347 095



FUN & ADVENTURE

BE PREPARED

YOU CAN BE A

KARATE

BLACK BELT!

KIDS AND ADULT CLASSES
AVAILABLE NOW!

PROMOTING:

- Self Confidence
- Family Friendly
- Safety Conscious
- Self Defence
- Discipline
- Flexibility
- Fitness



Begin your journey with our
friendly & committed instructors

OAKLEIGH EAST NOTTING HILL
KARATE SCHOOL

www.battistello.com.au

Unit 11a, 104-106 Ferntree Gully Rd Oakleigh East
(Behind Pinnacle Gym)

CALL NOW FOR TWO FREE LESSONS!

0420 736 734

LOOK FOR THE YELLOW KARATE SIGN!

**COME AND JOIN THE RAPTORS
AND MAKE NEW FRIENDS!**



OAKLEIGH
RAPTORS
BASKETBALL CLUB



ENQUIRE TODAY

**LOTS OF INDOOR
BASKETBALL FUN AT
A FAMILY ORIENTED
INCLUSIVE CLUB FOR**

AGES 7 AND UP!



For more information please visit

  **RAPTORS.ORG.AU**

or contact us on ☎ 0431 029 671

💬 registrations@raptors.org.au



HAWTHORN VFLW

Female Footy 4 Fun

Wednesday's 4:30-5:30pm

3 Week Program March 9th, 16th & 23rd

**Bunjil Bagora (Waverley Park)
Run by Hawthorn VFLW players!**

**This event is completely free
and open to girls of all abilities.**

