



DIARY DATES

FEBRUARY 2023

Wed 1, 8, 15, 22 – Preps Rest Day

Tue 21 – Bush Band Incursion

Mon 27 – Curriculum Day
Student Free Day

Tue 28 – Whole School Photo Day

MARCH 2023

Wed 1 – Prep Rest Day

Thu 2 – Bush Dance

Mon 13 – Labour Day Public Holiday

Thu 16 – Prep Pizza Night

**TUESDAYS & THURSDAYS
ARE NUDE FOOD DAYS
@ APPS**

DUE BY DATES:

Feb 17 - Book Club Issue 1 Orders

**COPIES OF ALL NEWSLETTERS ARE
AVAILABLE ON
OUR SCHOOL WEBSITE**

From the Principal Team

School Awards

Each week our classroom teachers select one student to receive a classroom award based on our school values, respect, integrity, resilience, inclusion and motivation. These awards are designed to encourage our students to aspire to meeting our values, rewarding and encouraging high level behaviours and mindsets. During the course of the year we aim that every child will be recognised with a school award. Parents are notified if their child is receiving an award if they would like to attend our Friday afternoon assembly to watch.

District Swimming Sports

We are pleased to report that our students did well in the district swimming sports this week and four students will progress onto the Divisional finals. Our swim team, represented Amsleigh Park very well and we are very proud of them. Thanks to Miss Hayes who was at the pool by 6.45am on behalf of our school, it's very much appreciated.



XUNO

Thank-you to families who are subscribed and regular users of XUNO. This online tool/App is our primary tool for communicating with our school families. Most messages go out via XUNO mail and therefore will be sent to the email accounts of all subscribers. In many instances this means that a family might receive the email to both parent's email account. It is very important that the email account is active and checked regularly. Please note that we will not send urgent messages via XUNO, and we will always contact parents via phone in this instance.

Commencing in 2023 we will be sending our notices for excursions and programs via XUNO which includes payment and electronic permission. The permission is a two-step process that includes a special SMS code. These notices can be accessed from the XUNO dashboard, and it is a relatively easy process to complete. You will still have the option to pay via BPay, which remains our preferred method of payment. If you have any issues with this process, please contact the general office.

Tree Management

Recently one of our mature gum trees lost a large limb causing concern for all. Fortunately, there was no-one nearby when it fell. I want to reassure our community that we are actively managing our trees, and in December 2022 an arborist completed an audit of all trees on our school site. We do this audit every couple of years to identify trees that need maintenance or removal. As a result, several trees have been identified for removal or significant pruning and will be undertaking \$10,000 of works during this term. The tree that lost a limb has been subject to monitoring, but it was **not** identified by the arborist as needing any work. Following the loss of this limb we have requested a further inspection of this tree; hence a barrier remains around the area. If required, the tree will be removed.

Curriculum Day and School Photos

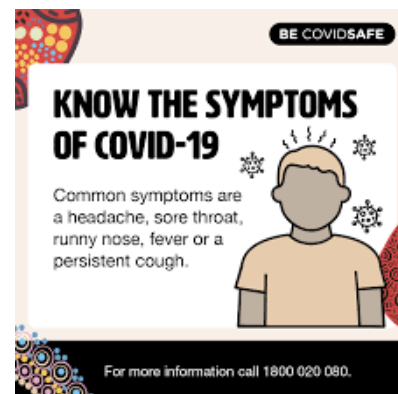
Monday 27th Feb will be a curriculum day at Amsleigh Park PS – so no school for children on this day. All day care will be available with YLV.

Tuesday 28th Feb is whole school photo day.

COVID-19

School life has settled into a nice rhythm in 2023 and we can see our students are relaxed and happy. It's great to be able to say this, given the past few years. At the risk of being unpopular we do need to remind our community that COVID-19 is still with us, like it or not. This has been pretty evident recently with a couple of staff, including myself, and several students being infected. Unfortunately, in my case it resulted in a nasty illness. I'm sharing this in good faith to remind everyone that we need to keep a 'relaxed vigilance' in place for COVID-19. Current strains are known to be highly virulent and can result in a serious illness for both children and adults.

Please remember that students are still required to stay home if they have symptoms such as a sore throat, snuffle etc. even if it seems like a minor thing. Taking this cautious approach lessens the chance we will have a super spreader event that could lead to multiple staff and students being absent for an extended period. We will continue to send home students who have any symptoms whilst at school and we hope you understand the need to do this in the best interests of all students and staff. If anyone needs rapid test kits please come to the office, who can provide you with a box for testing your child/ren.



Tutor Learning Initiative

The Victorian State Government has funded the tutor learning initiative for 2023 to support learning catch up. The Tutor Learning Initiative (TLI) is worth \$200+ million across State Government Schools which is an unprecedented investment of a program on this nature. This funding is being used to employ tutor teachers to work with students who fell behind in their learning. Typically, students participating in the TLI will have made less than 12 months of learning growth in 2021.

Our Tutor Learning Teachers are Mrs De Fazio, Mrs Dimopoulos and Mrs Kennedy. It's an excellent team who have done a fantastic job in getting the program established. Tutoring sessions have already commenced. Students in our TLI participate in 3 x weekly sessions (Small group) with the tutor teacher, focusing on areas that were identified by their teachers. The main focus areas for tutoring are Number, Reading and Writing, and there are also many incidental benefits, such as the development of confidence, independence, building self-esteem and persistence.

Parental Communication Policy

At Amsleigh Park PS we are committed to effective communication and ensuring that appropriate opportunities exist for parents to raise any concerns and ask questions related to their child's education, wellbeing and progress.

Typically, parents will need to make an appointment to meet with their child's teacher, especially if the matter needs an in-depth discussion. A meeting such as this is best done at a mutually convenient time, where there is enough time to have a proper discussion. Please contact the teacher via XUNO or email if you wish to make an appointment with them.

Before school is **not** a convenient time to contact teachers as they are usually making final preparations for teaching. A brief message is usually Ok before school, so long as a lengthy discussion is not required. After school is the best time and our teachers will endeavour to fit this in around our regular meetings, which are held on Mondays and Wednesdays. If anyone has any questions about this policy, which was developed and approved by the School Council, please contact me. The parent communication policy can also be accessed from our website. www.amsleigh.vic.edu.au

School Promotion

Each year we conduct a range of promotional activities so that prospective families find out about our school. Being hidden away in Oakleigh East is great, but it also means that some families do not even know we are here, even after we have placed materials at all local pre-schools and childcare centres. One thing we do know is that 'word of mouth' is one of the best forms of promotion, and a positive word often brings families along for a look. If anyone asks, encourage them to come along for a tour, and they can see all the great things that are happening. If you are still involved in local pre-schools or childcare please encourage other local families to visit Amsleigh Park for a tour.

CCTV

I want to inform our community, as a courtesy, that we have CCTV cameras all around Amsleigh Park PS. The purpose of these cameras is to provide security for our school campus out of school hours. CCTV is a very effective deterrent and helps us to ensure we are not subject to vandalism. The footage is kept for a period of two weeks and is only accessed if there is an issue.



School Picnic



A huge thank you to all parents, staff and students for a successful whole school picnic last week. We were lucky with a beautiful day for us to enjoy our local park. It was lovely to see the Grade 6 buddies with their Prep buddies, sharing a picnic lunch and getting to know one another through play. Thanks to all families who came along and made it a real community event.

VHAP

The Victorian High Ability Program (VHAP) has begun for 2023 at Amsleigh Park, with a group of our Grade 5 & 6 students having been selected by the Department of Education to be a part of the enrichment program for English and Mathematics.

The Victorian Government has again funded the Victorian High-Ability Program. This provides up to 48,000 Victorian high-ability students in Years 5 to 8 (Year 5-6 at Amsleigh Park) at government schools the opportunity to participate in a 10-week online extension and enrichment program, in English and mathematics.



The virtual program, delivered by Virtual School Victoria, will focus on extending and developing students' mathematic and English abilities.

The Department of Education has centrally managed the selection process for the program based on students' academic performance. The students at Amsleigh Park who are participating in this program commenced their first classes two weeks ago and have enjoyed meeting high ability students from other schools and their teacher from Virtual School Victoria. Congratulations to the students who have been selected to be in the program.

The Resilience Project – Parent Resources

We are again partnering with The Resilience Project this year at Amsleigh Park Primary School as part of our Social and Emotional Learning, to support the mental health and wellbeing of our school community. Keep an eye on Xuno, where we'll shortly send out some parent resources related to The Resilience Project and how you can support your child/ren developing gratitude, empathy and mindfulness. Later this year, there will be a parent/carer seminar held.



Year 6-7 Transition (Relevant for Year 6 families)

The State-wide year 6-7 transition process will begin in the first week of next term, with all Grade 6 students in Victoria receiving a transition information pack. This pack will detail the transition process, including the relevant paperwork required to apply for secondary schools. Please keep an eye out for this very important information early next term. In the meantime, we encourage our senior students and their families to attend open days/night and tour Secondary Schools in the area to become familiar with the possible schools your child may attend. If interested, please contact your local Catholic or Independent Secondary Schools to inquire into their enrolment process, as they differ from the shared process of all Government Secondary Schools. Please feel free to contact me with any queries regarding transition either through the school office, or via email: rebecca.carr@education.vic.gov.au



School Wide Positive Behaviour Support ~ SWPBS

School Wide Positive Behaviour Support (SWPBS) is implemented at Amsleigh Park to improve the learning and wellbeing of all students. SWPBS is a whole school approach for creating a positive, safe and supportive school climate in which students can learn and develop.

All staff are responsible for teaching the behaviour expectations, providing consistent positive feedback to students, and delivering consistent corrective feedback. The entire school, including the learning areas, walkways, toilets, and playgrounds are all considered part of the total learning environment.

We have included the behaviour matrix for new parents to become familiar with. You will see that the matrix is based on our school values, with a breakdown of how people can show that value in different settings. Our students have been demonstrating many of the expected behaviours and have been acknowledged for their great choices in these areas. We look forward to celebrating our next school SWPBS reward very soon! Stay tuned!







Michael Cormick
PRINCIPAL

Bec Carr
ASSISTANT PRINCIPAL

Amsleigh Park SWPBS Behaviour Expectations

At Amsleigh Park we show integrity by committing to our school values and expectations and appreciate the same from others.

	Always	Learning Areas (classrooms, specialist areas, outdoors, learning street etc)	Common Spaces (hallways, foyer, learning street, hall)	Outdoor - active (oval, playgrounds, asphalt)	Outdoor -passive (eating areas, front of school, friendship garden, junior garden)	Taps and Toilets	eSmart
Respect	I respect others' right to teach and learn I listen attentively I respect all property I use my manners I move safely	I remain with my group I consider everyone around me 	I walk on the left I greet others as I pass them	I keep my hands and feet to myself I use sports equipment appropriately I return equipment I am sun smart I respect trees and garden beds	I use the eating areas and rubbish bins I walk on paths I am sun smart I respect trees and garden beds	I use the drinking taps for drinking only I wash my hands and turn off the tap I throw paper in the bin I use the toilets appropriately I give people their privacy	I only access my own account and files I use devices and equipment with care I keep school settings I keep my information private I shut down and put my device on charge I use technology with patience I solve small problems on my own
	I celebrate the success of others I manage my emotions I persist when challenged I bounce back after disappointment	I look for more than one solution I consider and respect others' ideas	I take responsibility for my actions and words	I win and lose graciously I am open to a variety of games	I share spaces		I use technology with patience I solve small problems on my own
	I participate positively I engage in learning I try my best I line up quickly and quietly	I am prepared I ask for help I try to improve	I return to class as soon as possible 	I respond promptly to the music I follow the rules of the game	I respond promptly to the music	I go to the toilet during recess and lunch I only go to the toilet when I need to I return to class as soon as possible	I stay on task I follow instructions and only use appropriate programs or websites
Motivation	I am flexible and invite others to join in I respect differences I include others I ask to be included	I consider others I work with a variety of people I share classroom resources	I am mindful of others using the space I leave the space neat and tidy	I consider others I share spaces and equipment	I share spaces 	I patiently wait for my partner	I communicate respectfully online I share my knowledge and skills with others I share resources with others

FROM THE SCHOOL OFFICE ADMIN TEAM.....

Family Account Information

Thanks to the families that have paid 2023 Parent Contributions.

Please ensure that a **completed Payment Advice Form is sent to the office** so invoices can be processed, and payments allocated correctly.

A copy of the 2023 Parent Contributions letter and Student Book Pack Ordering Information is available on our website. www.amsleigh.vic.edu.au

Student Medications

A reminder that a Medical Action Plan, completed by a doctor, must be provided for any student medication (eg. Ventolin, Epi Pens, severe allergy medication) stored at the school office. **We cannot store or administer any medication without an Action Plan containing instructions from a doctor.** Parents are required to provide up to date Action Plans and inform the school office of any changes to a student's medical condition / action plan.

This does not however, include occasional antibiotics. Wherever possible, parents should request antibiotic prescriptions that can be taken at home, ie Antibiotics that are required 3 times per day can be taken at home in the morning, on return from school and again at bedtime. For students that do require antibiotics at school, a parent must complete a medication authority form when handing medication into the office. All medication must be stored securely at the office for the safety of all students.

It is recommended that students with hayfever etc. take their medication at home before school.

Absences / Late Arrivals

A reminder that all absences should be reported via Xuno. This ensures that Admin staff, who process all attendance data, including late arrivals and early exits are receiving the information in the first instance. Teachers are notified of the absence/late arrival during this process. If you wish to pass on any further information to teachers, please send them an additional email. If unable to report via Xuno, absences can be advised by emailing the General Office or phoning the school and selecting "1" when prompted to leave an absence message. **Students arriving late to school must be first signed in at the office by a parent before going to class.** Parents should complete the sign in register, fill out a "Late Slip" and hand this to their child who will proceed on their own to their classroom and give the late slip to the teacher.

School Emails – Check the email address you are sending / replying to

When contacting classroom teachers, or responding to their emails via Xuno, remember to double check the 'To' address.

Many emails meant for classroom teachers are arriving in the Amsleigh Park PS inbox, along with a huge number of other daily external emails. Replying to the school inbox may delay your communication being received by the classroom teacher in a timely manner and creates extra work for Admin staff.

When responding to a teacher's email, please refer to their email address that appears within their message and copy & paste that address into the address field.

Thank you,

Karen Hogan
Business Manager



APPS UNIFORM SHOP

Located in the Thelma Baily Learning & Sporting Centre

OPERATING HOURS – TERM 1 2023
Tuesday afternoons 3:00pm – 3:45pm

Pay by Credit/Debit Card at the General Office prior to collecting items from the uniform shop

*** Email orders for new Uniform items to the general office – credit/debit card payments only**

Please download & complete a copy of our uniform shop order form and send as a PDF to
amsleigh.park.ps@education.vic.gov.au

Any Back orders will be filled as soon as stock is available.

In the event of incorrect sizing, please return unworn items/s with tags intact, together with the original packing slip that includes the child's name, grade and the correct size required.

A copy of the current approved uniform list/order form is available on our website
www.amsleigh.vic.edu.au

Libby Jumas
Uniform Shop Co-Ordinator

UNIFORM SHOP – 2nd HAND UNIFORMS & LOST PROPERTY

Thank you to the families that donate quality used uniform items back to the school. Please ensure that items are clean and have had any name labels/naming removed prior to dropping off the items. Second hand uniform items are only available to purchase during the Uniform Shop opening hours. We cannot take orders for second hand items, however requests for items to assist families experiencing financial hardship should be made at the General Office.

As stock relies on donations from parents, and changes regularly, there is no guarantee on availability of items. **Stock of second hand items is currently very low, if you have any items that you are happy to donate back to the school, please drop them into the general office. Thank you**

LOST PROPERTY – Sadly, there are many items in our lost property area in the canteen foyer. Named items are returned to class rooms by our wonderful volunteer helpers. Un-named items will be disposed of at the end of each term if not collected. **Please ensure all of your child's belongings are clearly named and regularly check the Lost Property area if you are missing any items.**

Thank you,
Admin Team

Amsleigh Park Primary School

SchoolPix is coming to photograph on:

Tuesday, 28 February 2023

ORDER ONLINE AT WWW.SCHOOLPIX.COM.AU



Early Bird orders with free delivery to your school close five working days after your last photography session.

A postage fee will apply for orders placed after this date.

Sibling orders must be placed prior to 8am on Tuesday, 28 February.



Misplaced your order flyer? Please visit www.schoolpix.com.au and use the student search to find your child's unique ID or contact our Customer Care team on 1300 766 055.

Please note: Cash orders will not be accepted

James
Sonny
Tokikazu
Ryan

Alicia
Anna
Harvey
Zulkamain
Michaela
Harry

Daniel
Yianni
Jack
Nina

Amelie
Andromache

Zaina
Mushy
Edward
Angelina
Elisa
Joshua

Lillian
Ethan
Annika
Elsa

HAPPY

Birthday

to all our students
with February
birthdays!

THE AMSLEIGH BUZZ

AMSLEIGH PARK PRIMARY SCHOOL - UNIFORM SHOP ORDER FORM

Pricing Effective Term 1, 2023 (Jan 23 2023)

STUDENT NAME: _____ CLASS: _____ DATE: _____

DELIVER ORDER TO CLASSROOM ☐

OR

COLLECT FROM OFFICE ☐

APPROVED ITEM	COLOUR	\$ PRICE INC. GST	SIZE 4 QTY	SIZE 6 QTY	SIZE 8 QTY		SIZE 10 QTY	SIZE 12 QTY	SIZE 14 QTY	SIZE 16 QTY	TOTAL COST \$ (INC GST)	Office Use ✓ & Date Supplied	
Short Sleeve Polo <u>SSP</u> Size M-XL also avail POA	Navy/ Emerald	\$25.00											
Long Sleeve Polo <u>LSP</u> Size M-XL also avail POA	Navy/ Emerald	\$27.00											
Surf T-shirt <u>STS</u> (No Collar) Size M-XL also avail POA	Navy	\$15.00											
Windcheater <u>WC</u> Size 6 -14 Size Small (16)	Navy	\$24.00 \$28.00											
Bomber Jacket <u>BJ</u> Size 4-14 Size Small (16)	Navy/ Emerald	\$37.00 \$42.00											
Shorts -Cotton <u>CRS</u> Rugby (Unisex)	Navy	\$15.00											
Shorts- Gabardine Zip Pocket <u>GS</u>	Navy	\$17.00											
Track Pants <u>TPDK</u> Double Knee-Unisex Size 4-14 Size 16	Navy	\$23.50 \$27.00											
Girls Pants <u>SLP</u> Straight Leg Viscose/Nylon/Elastine	Navy	\$23.00											
Girls Skort Gab <u>SKTG</u> (Gabardine Fabric)	Navy	\$17.50											
Girls Skort Cotton <u>SKTC</u> Size 4-14 Size 16-20	Navy	\$19.50 \$24.00											
Summer Dress <u>SD</u>	Navy & White	\$23.00											
** Bike Shorts Cotton/Lycra <u>BS</u>	Navy	\$12.00											
Art Smock <u>AS</u>	Navy	\$15.00	Small			Medium		Large					
** Bike Shorts can only be worn UNDER a school dress. Not suitable as shorts				Total From Over Page							\$		
				TOTAL ORDER							\$		
Office Use Only Receipt #												Credit Card / EFT \$	Office Use

-----X-----

CREDIT CARD PAYMENT Student Name & Grade _____

MasterCard or Visa only - Submit to General Office prior to collecting Uniform Order

Cardholders Name: _____ Card Expiry Date: ____/____/____

TOTAL \$ _____ Cardholder Signature: _____ FOR: UNIFORM PURCHASE

Cardholder Contact Phone Number: _____

Card No:

--	--	--	--	--

--	--	--	--	--

--	--	--	--	--

--	--	--	--	--

APPS UNIFORM SHOP ORDER FORM

Effective Term 1, 2023

ITEM	COLOUR	PRICE INC GST	SIZE	QUANTITY				TOTAL \$ (INC GST)	Office Use ✓ Date Supplied
School Bag <u>SBAG</u>	Navy	\$36.00	N/A						
Book Bag <u>BB</u> <i>Not required for Preps</i>	Navy	\$8.00	N/A						
Slouch Hat <u>HAT</u>	Navy	\$10.00	SMALL 55cm	MED 57cm	LGE 59cm	XL 61cm			
Gloves <u>G</u>	Navy	\$5.00	4-6	7-10	12-16				
Winter Tights <u>WT</u> Sizes - 3-5 4-6 7-9 10-12	Navy	\$7.00							
Beanie <u>B</u> Child / Adult	Navy	\$5.00 ea	Child / Adult	CHILD	ADULT				
Scarf - one size <u>S</u>	Navy	\$5.00 ea	One size						
All Uniform items have been approved by the Amsleigh Park Primary School Council – see Uniform Policy for further information.									
Please ensure you are using a current version of this order form – prices are subject to change without notice, previous versions may have incorrect pricing.				TOTAL THIS PAGE \$ _____					

The uniform shop is located in the foyer of the Thelma Bailey Learning & Sporting Centre (Gym)

UNIFORM SHOP OPENING HOURS - TERM 1 2023

Tuesday afternoons 3:00pm – 3:45pm

Second hand Uniform items only available during this time

Credit /Eftpos/Debit card payments must be made at the General Office **prior to collecting/receiving uniform items.** "Tap" payments now available.

ORDER FORMS ARE AVAILABLE ON THE SCHOOL WEBSITE

www.amsleigh.vic.edu.au

**IF YOU DON'T NEED TO ATTEND THE UNIFORM SHOP IN PERSON DURING OPERATING HOURS,
PLEASE PLACE AN ORDER AS PER THE FOLLOWING INSTRUCTIONS**

1. Write child's name, grade and date of order at top of order form.
2. Indicate quantity of items required per size and total cost for each item.
3. Scan (PDF) and email this completed form to amsleigh.park.ps@education.vic.gov.au OR send an email directly to the school with your details, student name and grade, the items required and credit card details. Completed forms can also be dropped into the General Office.
4. Order will be processed and uniform items and will be either sent home with your child or collected from the office if requested. Orders are usually completed within one week (excepting unavoidable delays from the supplier). Any items not available at time of order will be placed on back order and provided as soon as possible.



Information for families

Since the beginning of 2021, Amsleigh Park commenced using Xuno as our main communication tool with families, including newsletter distribution, absence notifications, student reports, communication with your child's teacher, messages and reminders; permission forms and online payments.

Xuno is a web-based school management software that has a website portal for use in a browser and an App, 'Xuno Family' for use on smart phones or tablets.

It is easy to use and is a vital tool to keep our parents informed about their child/ren's school life and all things happening at Amsleigh Park.

Bookings for "Get to Know You" & Parent Teacher interviews are also managed through Xuno. Parents can use Xuno to notify the school of any address/contact detail changes, absences, late arrivals etc.

For new families - On enrolment, you should have received a welcome email from Xuno (please check your junk folder if not received in your inbox), with information on how to create your Xuno account. Please follow the instructions and links in the email, to create a Xuno account and password in your browser.

As Xuno is our main communication tool, it is important that all families are signed up so they are aware of school information and events.

Please contact the office if you require a Xuno welcome email to be resent.

Thank you,

Amsleigh Admin Team



APPS Wine Fundraiser ends 31/03/2023

Amsleigh Park Primary School has joined with Prospect Wines to offer a selection of 8 different wines to help raise funds for our school community.

The wines are sold under the "Prospect" label. They come from all major wine regions of Australia including but not limited to Adelaide Hills, Barossa Valley, Coonawarra, Clare Valley, Langhorne Creek, Limestone Coast, McLaren Vale Geelong, Heathcote, King Valley, Mornington Peninsula, Rutherglen, Yarra Valley, Margaret River, Griffith & Hunter Valley, plus the Marlborough region of New Zealand. Prospect Wines guarantee the quality of their wines and offer a money back service if you are not happy.

WIN 1 of 2 x \$200 Food + Wine Hamper PLUS \$50.00 towards our fundraiser profit total. Everyone who places an order receives a ticket in the draw. ** Drawn 31st March, 2023

Online Orders only. Minimum order is 6 bottles (can be all 1 wine, or any mix of different wines). Orders are delivered directly to your door and can be delivered Australia wide to most metro areas (standard delivery fee starts at \$9).

Click here for our online order page:

<https://prospectwines.com.au/product/amsleigh-park-primary-school/>

This link can be shares with family, friends and colleagues all around Australia



thanks
for your
support



**Bring out the best
in your child with
singing.**



Enrolments for 2023 with the
Australian Youth Choir are
now open to boys and girls from 8
years of age.



A great opportunity to develop singing,
build confidence, self-esteem and make new
friends in 2023.



Weekly rehearsals in Canterbury during
school Term with concerts included in the
year.

AUDITION NOW FOR 2023
EMAIL OR CALL TO LEAVE MESSAGE

office2@niypaa.com.au or 98362877

**Take your child's singing from the
shower to the stage!**

Visit our website www.niypaa.com.au



SALESIAN COMMUNITY PARTNERSHIP ANNOUNCEMENT

SALESIAN COLLEGE & LIVERPOOL FC

Salesian College Chadstone is excited to announce a new community partnership with Liverpool FC International Academy Australia. This new partnership will mark the first school in metropolitan Melbourne to offer an exclusive Liverpool FC Academy high-performance soccer school program.



To launch this very exciting community partnership, players can register to participate in our free soccer clinics at the College Community Fun Day on **Saturday 25 February, 2023**. Scan the QR code to register your interest in this event.



WELCOME TO SALESIAN

On Wednesday, 1 February 2023 our new Year 7 cohort entered the gates of Salesian College for the first time as a Chaddy boy.

Our Kimberley Hall was filled with an excited buzz from both students and their families.

Families were invited to stay for a prayer service in the Chapel and shared a cup of tea and coffee afterwards. It was a great start to the school year and a wonderful introduction to the Salesian Community for our new families.



GUYS & DOLLS PRODUCTION

Salesian College Chadstone and Sacred Heart Girls' College Oakleigh are excited to announce our 2023 co-production of 'Guys and Dolls'.

Keep an eye on our socials, with ticketing information coming soon!



**SALESIAN
COLLEGE**
CHADSTONE EST. 1957

10 Bosco Street
Chadstone Victoria
Australia 3148

T +61 3 9807 2644

www.salesian.vic.edu.au

SPORTS ACADEMY INFORMATION EVENING

Come along to our Sports Academy Information Evening to learn more about our Sports Academy, important enrolment guidelines and how your son can apply for our 2024 Sports Academy class.

Date: Monday 3 April
7:00pm - 8:00pm

Register: www.trybooking.com/events/landing?eid=9384048

Questions: ssellwood@salesian.vic.edu.au

INFORMATION EVENING FOR FUTURE FAMILIES

The event will provide prospective parents with an understanding of Salesian values and educational approach, and the opportunity to meet our Principal, Mark Ashmore, students, and Assistant Principals across all College areas.

Register your attendance for our upcoming 2023 Information Evening on Wednesday 7 March via www.salesian.vic.edu.au/book-a-tour/