



## DIARY DATES

### OCTOBER 2024

**Sat 12 – School Working Bee**  
1pm-4pm – All Welcome!

**Tue 15 – Foundie Minibeasts**  
Incursion

**Sat 19 – PFA Trivia Night**

**Thu 24 – State Library**  
Excursion (High Ability G5-6  
Students)

### NOVEMBER 2024

**Fri 1 – G3-4 Cricket Blast**  
G2 Sleepover & G1 Stay Late

**Tue 5 – Melb Cup Day**  
Public Holiday

**Wed 6 – Foundation Botanic**  
Gardens Excursion

**TUESDAYS & THURSDAYS**  
**ARE NUDE FOOD DAYS**  
@ APPS

## DUE BEFORE DATES

**Fri 18 Oct – G1 Stay Late & G2**  
Sleep Over approval &  
payments

**Fri 25 Oct - Book Club Issue 7**  
LOOP Orders Close

**COPIES OF ALL NEWSLETTERS ARE**  
**AVAILABLE ON**  
**OUR SCHOOL WEBSITE**

## Principal Team Report

### Welcome Back for Term 4

A warm welcome to everyone in the Amsleigh Park community for Term 4. We hope our students had a restful break and families were able to take some time together in some of the glorious (although variable) Spring weather. I expect that our students were looking forward to coming back to school to see their friends and teachers again. It's certainly been a great start to Term 4 and great to see everyone back at school.



### Buildings and Grounds Improvements

This past week contractors have been working at Amsleigh Park on two projects. We have made improvements to the fencing around the staff car park off Oakleigh Street enclosing this car park with new fencing and gates. The fencing that was damaged in Term 3 was also replaced at the same time. The exterior timber cladding of the Junior Learning Centre is also getting recoated to ensure that this timber is kept in good condition. It also gives this building a refresh and it's looking good as a result. Along with the regular maintenance we are undertaking on an ongoing basis, our campus continues to provide a safe and attractive school environment.



### APPS Working Bee

We continue to work together as a school community to undertake improvements to our school environment. This Saturday our PFA has a community working bee from 1.00pm – 4.00pm. The focus will be on adding soft fall to our 3-6 playgrounds, tidying up around the play areas and gardens.

### New Social Media Resources

The Department of Education have developed new fact sheets to help students have positive and safe online experiences. As educators (and parents) we know social media is an important tool to help students stay connected, communicate and express themselves.

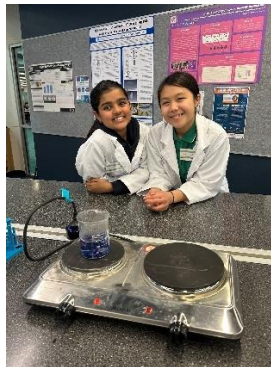
The fact sheets for parents and carers of primary and secondary students, provide information about online safety and advice about what to do if anything goes wrong. These fact sheets are available via the link – [Safe Socials for Parents and Carers](#).

We strongly urge parents to talk with their children and discuss the dangers of social media and, hopefully ensure that their children are not using platforms that are rated 13+ such as Facebook, TikTok, Instagram and Snapchat. In our experience students are simply not mature enough to be using social media safely.



## John Monash Science School

I had the pleasure of accompanying 12 of our Grade 6 students to the John Monash Science School across Term 3 and 4 to participate in two special science and maths outreach programs. The programs, Big Science-Little Scientists and Mini Mathematicians were undertaken over 4 sessions. Throughout the sessions our students undertook a range of very interesting learning experiences with the support of Year 11 students from John Monash. The tasks were all highly engaging and different, so they were definitely a big hit with our students. I commend all our participants, it was terrific to accompany this group to this program and I was immensely proud of their behaviour, participation and engagement. Many thanks to the parents who assisted with some of the transport, it is greatly appreciated.



## Class Placements 2025

Later this term we will start the complex process of placing students into classes for 2025. We spend many hours undertaking this important work, which considers variables such as:

- Academic ability and performance
- Work habits e.g. ability to work independently
- Classroom behaviour
- Social network /friendships
- Social maturity
- Special needs e.g. twins, siblings
- Special factors such as 'anxiety'

During this process, changes and adjustments to the proposed class groups are made over several weeks. Draft class lists are then submitted to the Leadership team for final ratification and then finally teachers are assigned to class groups. For the record teachers do not ever pick students to be in their class, all classes are assigned by the Principal Class team once the classes have been finalised.

## Requesting Special Consideration for Student Placement for 2025

If any families have any requests for placement of children on educational grounds, please send this to me no later than Friday 25<sup>th</sup> October. Please note that **requests for specific teachers are not accepted**. It is our important aim that we place children in a happy and secure learning environment. Whilst we do keep all previous requests from past years, they do become dated in terms of relevance, so we will only consider information from the past two years. If a previous request on educational grounds still exists, please take the time to bring this to our attention once again so that we are aware of any long-term considerations that might still be relevant. Please send any requests to [amsleigh.park.ps@education.vic.gov.au](mailto:amsleigh.park.ps@education.vic.gov.au) and mark them attention to 'Michael – class placement'.

## Sunsmart- Reminder

We did mention this in our newsletter at the end of last term, but worth a reminder now that we're into term 4: As the UV levels increase at this time of year, we need to be SunSmart! The Cancer Council recommend a combination of sun protection measures:

1. Slip on some sun-protective clothing that covers as much skin as possible.
2. Slop on broad spectrum, water resistant SPF30+ (or higher) sunscreen. Put it on 20 minutes before you go outdoors and every two hours afterwards. Sunscreen should never be used to extend the time you spend in the sun.
3. Slap on a hat – broad brim or legionnaire style to protect your face, head, neck and ears.
4. Seek shade.
5. Slide on some sunglasses – make sure they meet Australian Standards.

Our SunSmart Policy specifies that all students must wear a SunSmart hat whenever they are outdoors at school. Please support our SunSmart policy by providing a 'sun smart' hat for your child. Hats are available for purchase at the uniform shop.





## Resilience, Rights and Respectful Relationships

Again in 2024, Resilience, Rights and Respectful Relationships education is being taught as part of the Victorian curriculum. At Amsleigh Park, we all want our students to have an education that gives them the best start to a happy, healthy, and prosperous life. This approach can lead to positive change in students' academic outcomes, their wellbeing, classroom behaviour, and students' relationships with one another, their teachers and families. The Resilience, Rights and Respectful Relationships program is one way we aim to provide this for our students.

Resilience, Rights and Respectful Relationships ('The Rs'), takes a whole-school approach, recognising that schools are a place of learning, a workplace and a key part of local communities. It embeds a culture of respect and equality across our entire school community, from our classrooms to staffrooms, sporting fields, and community events. In the classroom, students will learn problem-solving skills, to develop empathy, support their own wellbeing and build healthy relationships with others.

The Rs curriculum focusses on the topics of emotional literacy, personal strengths, positive coping, problem solving, stress management, help seeking, gender and identity; and positive gender relationships.

The Resilience, Rights and Respectful Relationships program was developed after the Royal Commission into family violence. Sadly, the prevalence of family violence and impact on children continues to be of great concern. It was a recommendation from the Royal Commission that all schools teach Resilience, Rights and Respectful Relationships Education through a Whole School Approach, to support students to recognise and regulate emotions, develop empathy for others and establish and build a framework for positive relationships. Please see your child's teacher, Bec Carr or Michael Cormick if you'd like further information.

### Student Late arrivals / early exits

A reminder to families that when a student is arriving late at school, they must come via the office and be signed in by a parent. It is important we have an accurate record of who is on site at school at all times, to ensure we can keep all of our students safe. Similarly, if a student needs to leave early as happens from time to time, parents must sign their children out at the office so Admin staff can record the early departure and notify the teacher to send the student to the office. Thanks for your help with this procedure.

### Thunderstorm Asthma – Be prepared this pollen season:

Grass pollen season, which typically runs from October to December each year in Victoria, brings an increase in asthma and hay fever symptoms. It also increases the risk of thunderstorm asthma. For people with asthma or hay fever, especially those who experience wheezing or coughing with their hay fever, thunderstorm asthma can be sudden, serious and even life threatening.

Our school will implement a range of measures to keep our school community safe as the risk of thunderstorm asthma increases.

Many of our staff are trained in asthma first aid, and we will monitor the VicEmergency app to receive thunderstorm warnings, and, where appropriate, keep students indoors when weather forecasts identify greater risk.

During the season, there are some things you can do to prepare and protect yourself and your family:

- If your child has ever had asthma, talk to your doctor about what you can do to help protect them from the risk of thunderstorm asthma this pollen season, including updating your asthma action plan. Taking an asthma preventer properly and regularly is key to preventing asthma, including thunderstorm asthma.
- If your child has hay fever, see your pharmacist or doctor for a hay fever treatment plan and check if you should have an asthma reliever puffer. These are available from a pharmacy without a prescription.
- If your child has hay fever and experiences wheezing and coughing, it is important to make sure they don't also have asthma. Speak to your doctor about an asthma action plan.
- Where possible, avoid being outside during thunderstorms from October to December, especially during the wind gusts that come before the storm. Go inside and close your doors and windows. If you have your air conditioning on, turn it to 'recirculate'.

Protect yourself this pollen season – managing asthma and allergies matters.

For more information, speak to your doctor. You can also visit the [Better Health Channel](#) website.



# THE AMSLEIGH BUZZ

## School Savings Bonus:

As shared with you previously, parents and carers of every child enrolled in a Victorian government school in 2025 will receive the one-off School Saving Bonus \$400 support. In the coming months, the Department of Education will send you 2 email communications for each of your children enrolled in Victorian government schools. By Friday 18 October 2024, please ensure that your child's 2025 enrolment is completed and that your contact information is up to date.

The 2 emails from the Department of Education will:

1. Confirm your email address between mid-October and late-November.
2. Provide you with your unique \$400 School Saving Bonus code by the end of November.

If you do not receive a confirmation email from the department by late-November, please check your spam or junk folders and contact our office team if needed. You can read more about the School Saving Bonus on the Department of Education website, with key information now available in 14 different languages.

## State Schools Spectacular

Check out the happy bunch below. We all enjoyed a wonderful performance from our students in the massed choir in this year's State Schools Spectacular. The talent across the government school system is phenomenal and the show was simply incredible, with thousands of students involved in the various performances. Many thanks to Mrs Kennedy who organised and did all the preparation work with our students, and to Miss Hayes who joined her on the day of the performances. As you can see in true Amsleigh fashion a good number of staff came along to support our students and we enjoyed a wonderful afternoon.

Until next time,

**Michael Cormick**  
Principal



**Bec Carr**  
Assistant Principal



## FROM THE SCHOOL OFFICE ADMIN TEAM.....

### Family Accounts

Please regularly check your Xuno account for any fees or events that require payment and or approval. A reminder that unallocated CSEF, receipts or credits note from your family account can be used to pay for events. Credit note amounts are shown with a negative symbol, **-\$10.00**. If you would like a copy of your current account statement, please email the office.

### Student Medications

A reminder that a Medical Action Plan, completed by a doctor, must be provided for any student medication (e.g. Ventolin, Epi Pens, severe allergy medication) stored at the school office.

**We cannot store or administer any medication without an Action Plan containing instructions from a doctor.**

Parents are required to provide up to date Action Plans and inform the school office of any changes to a student's medical condition / action plan.

This does not however, include occasional antibiotics. Wherever possible, parents should request antibiotic prescriptions that can be taken at home, ie Antibiotics that are required 3 times per day can be taken at home in the morning, on return from school and again at bedtime. For students that do require antibiotics at school, a parent must complete a medication authority form when handing medication into the office.

**All medication, including over the counter types, must be stored securely at the office for the safety of all students.**

**It is recommended that students with hay fever etc. take their medication at home before school.**

### Absences / Late Arrivals

**A reminder that all absences should be reported via Xuno.** This ensures that Admin staff, who process all attendance data, including late arrivals and early exits, are receiving the attendance information in the first instance. Teachers are notified of the absence/late arrival during this process. If you wish to pass on any further information to teachers, please send them an additional email. If unable to report via Xuno, absences can also be advised by emailing the General Office or phoning the school and selecting "1" when prompted to leave an absence message.

**Students arriving late to school must be first signed in at the office by a parent before going to class.**

Parents should complete the sign in register, fill out a "Late Slip" and hand this to their child who will proceed on their own to their classroom and give the late slip to the teacher.

### School Emails – Check the email address you are sending / replying to

When contacting classroom teachers, or responding to their emails via Xuno, remember to double check the 'To' address.

Many emails meant for classroom teachers are arriving in the Amsleigh Park PS inbox, along with a huge number of other daily external emails.

Replying to the school inbox may delay your communication being received by the classroom teacher in a timely manner and creates extra work for Admin staff.

When responding to a teacher's email, please refer to their email address that appears within their message and copy & paste that address into the address field.

Thank you,

Karen Hogan  
Business Manager



## APPS UNIFORM SHOP

Located in the Thelma Baily Learning & Sporting Centre

**OPERATING HOURS – TERM 4 2024**

**Tuesday afternoons 3:00pm – 3:45pm**

**Pay by Credit/Debit Card at the Uniform Shop**

Orders for new Uniform items can be emailed to the general office if unable to attend in person on Tuesday afternoons – credit/debit card payments only

Please download & complete a copy of our uniform shop order form and send as a PDF to [amsleigh.park.ps@education.vic.gov.au](mailto:amsleigh.park.ps@education.vic.gov.au)

**Please ensure you are using a current version of our order form – prices are subject to change without notice, previous versions may have incorrect pricing.**

Any Back orders will be filled as soon as stock is available.

In the event of incorrect sizing, please return unworn items/s with tags intact, together with the original packing slip that includes the child's name, grade and the correct size required.

A copy of the current approved uniform list/order form is available on our website [www.amsleigh.vic.edu.au](http://www.amsleigh.vic.edu.au)

Libby Jumas  
Uniform Shop Co-Ordinator

## UNIFORM SHOP – 2<sup>nd</sup> HAND UNIFORMS & LOST PROPERTY

Thank you to the families that donate quality used uniform items back to the school. Please ensure that items are clean and have had any name labels/naming removed prior to dropping off the items. Second hand uniform items are only available to purchase during the Uniform Shop opening hours. We cannot take orders for second hand items, however requests for items to assist families experiencing financial hardship should be made at the General Office.

As stock relies on donations from parents, and changes regularly, there is no guarantee on availability of items.

**LOST PROPERTY** - Please ensure all of your child's belongings are clearly named and you regularly check the Lost Property area if you are missing any items. If you could also please check that your child is in fact wearing their own hat/jacket/jumper as these can sometimes be mistakenly picked up and worn unknowingly by other students. Named items are returned to class rooms by our wonderful volunteer helpers. Un-named items will be disposed of at the end of each term if not collected

**Thank you,  
Admin Team**





## APPS UNIFORM SHOP ORDER FORM

Effective Term 4, 2024

ITEM	COLOUR	PRICE INC GST	SIZE	QUANTITY				TOTAL \$ (INC GST)	Office Use ✓ Date Supplied
School Bag <u>SBAG</u>	Navy	\$42.00	N/A						
Book Bag <u>BB</u> <i>Not required for Preps</i>	Navy	\$8.00	N/A						
Slouch Hat <u>HAT</u>	Navy	\$10.00	SMALL 55cm	MED 57cm	LGE 59cm	XL 61cm			
Gloves <u>G</u>	Navy	\$5.00	4-6	7-10	12-16				
Winter Tights <u>WT</u> Sizes - 3-5 4-6 7-9 10-12	Navy	\$9.00							
Beanie <u>B</u> Child / Adult	Navy	\$5.00 ea	Child / Adult	CHILD	ADULT				
Scarf - one size <u>S</u>	Navy	\$5.00 ea	One size						
All Uniform Items have been approved by the Amsleigh Park Primary School Council – see Uniform Policy for further information.									
Please ensure you are using a current version of this order form – prices are subject to change without notice, previous versions may have incorrect pricing.				TOTAL THIS PAGE \$ _____					

The uniform shop is located in the foyer of the Thelma Bailey Learning & Sporting Centre (Gym)

### UNIFORM SHOP OPENING HOURS - TERM 4 2024

Tuesday afternoons 3:00pm – 3:45pm

**Second hand Uniform items only available during this time**

Credit /Eftpos/Debit card payments must be made at the General Office or Uniform Shop **prior to collecting/receiving uniform items.** "Tap" payments now available.

ORDER FORMS ARE AVAILABLE ON THE SCHOOL WEBSITE

[www.amsleigh.vic.edu.au](http://www.amsleigh.vic.edu.au)

### **IF YOU DON'T NEED TO ATTEND THE UNIFORM SHOP IN PERSON DURING OPERATING HOURS, PLEASE PLACE AN ORDER AS PER THE FOLLOWING INSTRUCTIONS**

1. Write child's name, grade and date of order at top of order form.
2. Indicate quantity of items required per size and total cost for each item.
3. Scan (PDF) and email this completed form to [amsleigh.park.ps@education.vic.gov.au](mailto:amsleigh.park.ps@education.vic.gov.au) OR send an email directly to the school with your details, student name and grade, the items required and credit card details. Completed forms can also be dropped into the General Office.
4. Order will be processed and uniform items and will be either sent home with your child or collected from the office if requested. Orders are usually completed within one week (excepting unavoidable delays from the supplier). Any items not available at time of order will be placed on back order and provided as soon as possible.





## Information for families

**October 2024 – We still have a number of families with incomplete or incorrect contact and/or emergency contact details**

**PLEASE CHECK YOUR FAMILY DETAILS IN XUNO & UPDATE IF NECESSARY.**

**Thank you 😊**

Amsleigh Park uses Xuno as our main communication tool with families, including newsletter distribution, absence notifications, student reports, communication with your child's teacher, messages and reminders, event approvals and online payments.

Xuno is a web-based school management program that has a website portal for use in a browser and an App, 'Xuno Family' for use on smart phones or tablets.

It is easy to use and is a vital tool to keep our parents informed about their child/ren's school life and all things happening at Amsleigh Park.

Bookings for "Get to Know You" & Parent Teacher interviews are also managed through Xuno.

Parents can use Xuno to notify the school of any address/contact detail changes, absences, late arrivals, upcoming family holidays etc.

For new families - On enrolment, you should have received a welcome email from Xuno (please check your junk folder if not received in your inbox), with information on how to create your Xuno account. Please follow the instructions and links in the email to create a Xuno account and password.

**As Xuno is our main communication tool, it is important that all families are signed up so they are aware of school information and events and can easily inform the school of their child's absences and contact detail changes.**

Please contact the office if you require a Xuno welcome email to be resent or a password reset.

Thank you,

Amsleigh Admin Team





## The PFA Update

### PARENT TRIVIA NIGHT 2024



Only 1 more week until our Parent's Night of Nights!

#### Have you booked your table yet?

Join us for an adults only, fun night filled with laughter, games and trivia! Dress up in your best Olympic-themed gear and get ready for trivia, raffles, games, a silent auction and loads of prizes.

Grab a table for 10 or just pick a single ticket and we can join you up with others to share the fun with.

**Saturday 19th October from 7pm in the APPS Thelma Bailey Centre**

BYO Nibbles and Drinks (alcohol is OK at this adults only event) and some spare cash to join in the games!

Test yourself and your friend's knowledge at this 'DO NOT MISS' event!

<https://www.trybooking.com/CVNFI>

## SPLATACULAR RUN4COLOUR

**31st October, 2024**

You will have received your fun-filled Run4Colour booklet this week.

**Don't forget to create a profile online before Sunday 13th October to win your first prize!!**

Fundraising for our school has never been this much fun! Not only does Amsleigh Park Primary School benefit, but you can also cash in on great prizes OR raise money to donate to a fabulous cause.

The colourful fundraising finale will be with a **SPLATACULAR RUN4COLOUR** on

**Thursday 31st October at 1.45pm**

Everyone is welcome to watch or even volunteer to slime, powder and foam our kids colourful!

Stay tuned for more information and get fundraising!



# THE AMSLEIGH BUZZ

ZOOPER  
DOOPERS



KILLER PYTHONS\*



\*Contain gluten

## THE BIRTHDAY BUCKET!

Wondering what to do for your child's class to help celebrate their birthday?

Order a BIRTHDAY BUCKET and have a festive bucket delivered to your child's classroom just prior to lunch filled with either Zooper Doopers or Killer Pythons to ensure your child's birthday does not go by unnoticed.

Cost: \$15

Just fill out the below form and return it to the front office a minimum of 1 week prior to the date you would like your birthday bucket delivered. We will take care of the rest!

Please contact the PFA with any questions: [apps.parents@gmail.com](mailto:apps.parents@gmail.com)

### APPS – BIRTHDAY BUCKET ORDER SLIP

Please complete all details and return to the school office (*min 1 week prior to delivery date*)

STUDENT NAME: \_\_\_\_\_ CLASS: \_\_\_\_\_

Select one  Zooper Doopers \$15.00 OR  Killer Pythons \$15.00

Date Birthday Bucket to be delivered to classroom \_\_\_\_\_

Payment to be made over the counter at the School Office by Credit/Debit Card only

Thankyou.

### IMPORTANT

Orders must be placed a minimum of 1 week prior to your requested delivery date



Prizes for Best  
Dressed Table:  
'Olympics' theme

Amsleigh Park PS  
Parents Only Night



# TRIVIA Night

**TABLES SELLING  
FAST!!!**

Join in and test your knowledge of trivia with all  
new games and great prizes!

**TICKETS NOW AVAILABLE AT**

**<https://www.trybooking.com/CVNF1>**

Tables of 10: \$150   Single tickets: \$20

**Saturday, 19 October 2024**

7.00-11.00pm



Thelma Bailey Centre, APPS

Trivia, games, silent auction and prizes galore!



## Get your Colour on! Amsleigh Park Primary School and the PFA are hosting a Colour Splatacular Run 4 Fun!

Our Colour Splatacular Run 4 Fun will be on Thursday 31<sup>st</sup> October 2024 from 1.45pm to 3.30pm.

Not only are we hosting an awesome Colour Splatacular Run 4 Fun, students can order up to a total of 5 prizes based on their donations received. They can even mix and match! Don't want the prizes, donate your donations to one of the five causes – Carbon Neutral (tree planting), Great Barrier Reef Foundation (coral planting or turtle protection), The Smith Family (reading support) or OzHarvest (providing meals).

Students have received a sponsorship book with instructions on setting up their cybersafe, online fundraising profile at [www.australianfundraising.com.au](http://www.australianfundraising.com.au). This is an entirely online fundraiser; all cash donations must be converted to online donations to redeem your prizes.

### Extra Incentives to Fundraise!

- ★ Setup your online profile within 7 days of the fundraiser launch and win your first prize.
- ★ Online Golden Coins – complete fun online tasks to redeem an extra \$75 towards your prize credit.
- ★ Monty the Monstar's Bonus Prizes – achieve milestones to unlock Monty's bonus prizes.
- ★ \$10,000 Budget Booster Bonanza Spending Spree for one organisation's highest fundraising student
- ★ Our school will win an extra \$5,000 if we have the highest average fundraised amount per student in 2024.
- ★ A Play Station 5 Gaming Bundle – see your child's sponsorship booklet for more!

For more information, please contact the PFA on [apps.parents@gmail.com](mailto:apps.parents@gmail.com).

Happy fundraising!





## We are officially part of School Rewards 2024!

Earn points for our school with every dollar spent at The Pancake Parlour to help us win up to \$6,000!

Simply scan QR code to download the app and join our school!



1.

Download app & select School Rewards



2.

Click 'Join Your School'



3.

Select our school from the list



4.

Scan barcode to earn points for our school



For more info head to: [www.schoolrewards.com.au](http://www.schoolrewards.com.au)



## TUESDAY AFTERSCHOOL MULTI-SPORTS PROGRAM

TERM 4 2024 INFORMATION

Programs run weekly on one day a week for one hour.

This term we will focus on the following sports:



This weekly program gives children skills and confidence in a fun and enjoyable environment. It also encourages their enthusiasm for sport and the life skills that such involvement brings – giving them confidence to join sports clubs and teams in the future.

For Prep – Year 4 students.

PRICES - \$18/SESSION, PRO RATED. PAYMENT IS MADE FOR AN ENTIRE TERM OR TERM REMAINDER NO SINGLE CLASS BOOKING.

### 9 Week Multi Sport Program

DAY: TUESDAY AFTERNOONS

(Not on Cup day 05/11)

START: Tues 15th Oct (Week 2 of Term 4)

END: Tues 17th Dec

TIME: 3:40pm to 4:40pm

- Preps are picked up by coaches from classrooms.
- All other students meet coaches at the undercover basketball court.

## THURSDAY AFTERSCHOOL BASKETBALL PROGRAM

TERM 4 2024 INFORMATION

Programs run weekly on one day a week for one hour.

This term we will focus on the following skills:

- ✓ Dribbling
- ✓ Shooting
- ✓ Defence
- ✓ Passing
- ✓ Modified Games

This weekly program gives children skills and confidence in a fun and enjoyable environment. It also encourages their enthusiasm and participation and the life skills that such involvement brings – giving them increased confidence in the future.

For Prep – Year 4 students.

PRICES - \$18/SESSION, PRO RATED. PAYMENT IS MADE FOR AN ENTIRE TERM OR TERM REMAINDER. NO SINGLE CLASS BOOKING.

### 10 Week Basketball Program

DAY: THURSDAY AFTERNOONS

START: Thurs 17th Oct (Week 2 of Term 4)

END: Thurs 19th Dec

TIME: 3:40pm to 4:40pm

- Preps are picked up by coaches from classrooms.
- All other students meet coaches at the undercover basketball court.



### GET IN TOUCH

Contact: Emily Norgate

Phone: 0450 794 197

Email: [emily@kellysports.com.au](mailto:emily@kellysports.com.au)

Website: [kellysports.com.au/events](http://kellysports.com.au/events)

Facebook: #KellySportsAustralia



BOOK ONLINE NOW AT

 **KELLYSPORTS.COM.AU**

**SEARCH AMSLEIGH PARK PRIMARY SCHOOL**

# AURORA CALISTHENICS COLLEGE

FUN, FITNESS, FRIENDSHIP!  
A PERFECT COMBINATION OF  
GYMNASTICS, BALLET AND DANCE!

## 2 FREE CLASSES!

### Class Times:

Tinies (3 - 7yo): Thurs 4.45 - 6.00pm

Subbies (8 - 10yo): Wed 4.45 - 6.30pm

Juniors (11 - 13yo): Tues 5.45 - 7.45pm

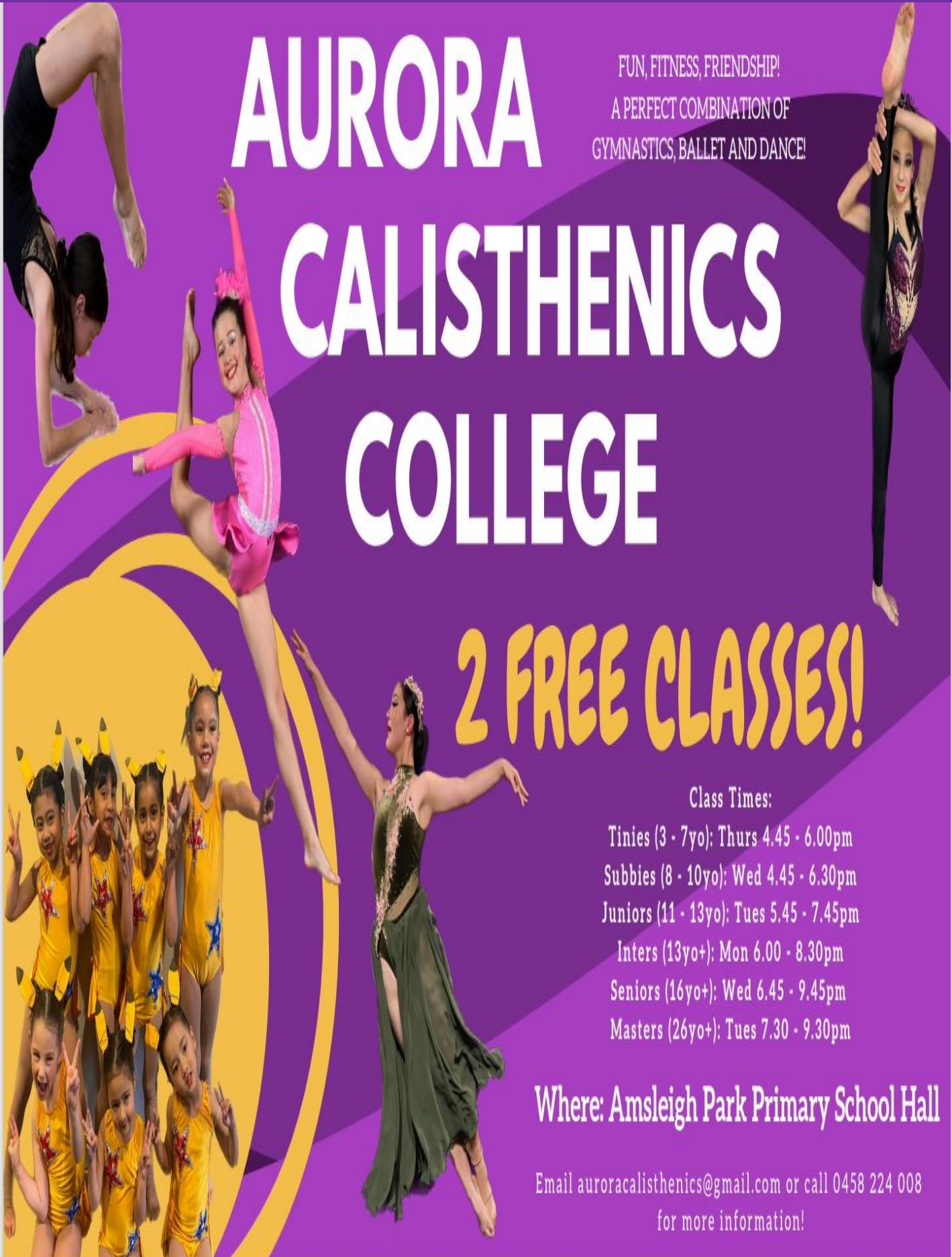
Inters (13yo+): Mon 6.00 - 8.30pm

Seniors (16yo+): Wed 6.45 - 9.45pm

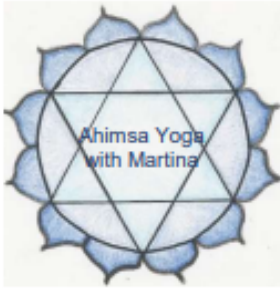
Masters (26yo+): Tues 7.30 - 9.30pm

**Where: Amsleigh Park Primary School Hall**

Email [auroracalistenics@gmail.com](mailto:auroracalistenics@gmail.com) or call 0458 224 008  
for more information!







## Hatha Yoga classes are back at Amsleigh Park PS!



**Saturdays, 10:30am – 11:30am**, Before & After Care Building  
Classes will run during **term 4** (12 October to 21 December 2024)

The gentle and nurturing classes consist of

- postures (different variations & the use of props will be offered),
- a breathing technique, &
- a guided meditation

to enable participants to reconnect to their inner Self & to reap the many physical and mental benefits of Yoga.

**Experience for yourself, what a difference practicing Yoga may make in your life!**

**Introductory offer** for new students:  
Enrol & pay by 11/10/2024, **get 1 class free:**  
\$150 for 11 classes.  
\$165 for 11 classes from 12/10/2024

Need more flexibility? There are 2 7-class-passes available this term for \$125, expiry 21/12/2024. Once these are gone, class passes will only be available again in 2025.

Please **reserve your spot** by sending a **SMS** with your name & email address to:



Martina Rosenberger - Ahimsa Yoga with Martina  
Advanced Diploma of Yoga Teaching  
Yin Yoga Teacher Training, Level 1  
Mobile: **0431 845 664**  
Email: [ahimsayogawithmartina@gmail.com](mailto:ahimsayogawithmartina@gmail.com)

**Private & corporate classes, events & vouchers also available**



THE MAGIC RETURNS IN 2024

★★★★

MELBOURNE'S

**C**HRISTMAS

WONDERLAND

★★★★



29 NOVEMBER - 24 DECEMBER



CAULFIELD RACECOURSE

STATION STREET, CAULFIELD EAST, VIC 3145



BOOK NOW AT **ticketmaster**® OR CALL 0400 881 007

MELBOURNESCHRISTMASWONDERLAND.COM.AU